



[Go to Product page](#)

Datasheet for ABIN7187865  
**anti-PWWP2B antibody (Internal Region)**

1 Image

### Overview

Quantity:	100 µg
Target:	PWWP2B
Binding Specificity:	Internal Region
Reactivity:	Human
Host:	Rabbit
Clonality:	Polyclonal
Conjugate:	This PWWP2B antibody is un-conjugated
Application:	Western Blotting (WB), ELISA, Immunohistochemistry (IHC)

### Product Details

Immunogen:	Synthesized peptide derived from the Internal region of Human PWWP2B.
Isotype:	IgG
Cross-Reactivity:	Human
Purification:	The antibody was affinity-purified from rabbit antiserum by affinity-chromatography using epitope-specific immunogen.

### Target Details

Target:	PWWP2B
Alternative Name:	PWWP2B ( <a href="#">PWWP2B Products</a> )
Background:	BA432J24.1 antibody, FLJ39621 antibody, FLJ46823 antibody, OTTHUMP00000020770

## Target Details

antibody, Pp8607 antibody, PWP2B\_HUMAN antibody, PWWP domain containing 2 antibody, PWWP domain containing 2B antibody, PWWP domain-containing protein 2B antibody, PWWP2 antibody, PWWP2B antibody, RP11 273H7.1 antibody

UniProt: [Q6NUJ5](#)

## Application Details

Application Notes: WB:1:500-1:2000, IHC:1:100-1:300, ELISA:1:20000,

Restrictions: For Research Use only

## Handling

Format: Liquid

Buffer: Liquid in PBS containing 50 % glycerol, 0.5 % BSA and 0.02 % sodium azide.

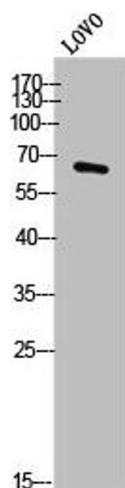
Preservative: Sodium azide

Precaution of Use: This product contains Sodium azide: a POISONOUS AND HAZARDOUS SUBSTANCE which should be handled by trained staff only.

Storage: -20 °C,-80 °C

Storage Comment: Upon receipt, store at -20°C or -80°C. Avoid repeated freeze.

## Images



### Western Blotting

**Image 1.** Western Blot analysis of LOVO cells using PWWP2B Polyclonal Antibody