



[Go to Product page](#)

Datasheet for ABIN7187886

anti-WTH3DI antibody (Internal Region)

1 Image

Overview

Quantity:	100 µg
Target:	WTH3DI
Binding Specificity:	Internal Region
Reactivity:	Human
Host:	Rabbit
Clonality:	Polyclonal
Conjugate:	This WTH3DI antibody is un-conjugated
Application:	ELISA, Western Blotting (WB)

Product Details

Immunogen:	Synthesized peptide derived from the Internal region of Human Rab 6C.
Isotype:	IgG
Cross-Reactivity:	Human, Mouse, Rat
Purification:	The antibody was affinity-purified from rabbit antiserum by affinity-chromatography using epitope-specific immunogen.

Target Details

Target:	WTH3DI
Alternative Name:	RAB6C (WTH3DI Products)
Background:	RAB 6C antibody, Rab6 like protein WTH3 antibody, Rab6-like protein WTH3 antibody, RAB6C

Target Details

antibody, RAB6C member RAS oncogene family antibody, RAB6C_HUMAN antibody, Ras related protein Rab 6C antibody, Ras-related protein Rab-6C antibody, WTH3 antibody

UniProt: [Q9H0N0](#)

Application Details

Application Notes: WB:1:500-1:2000, ELISA:1:40000,

Restrictions: For Research Use only

Handling

Format: Liquid

Buffer: Liquid in PBS containing 50 % glycerol, 0.5 % BSA and 0.02 % sodium azide.

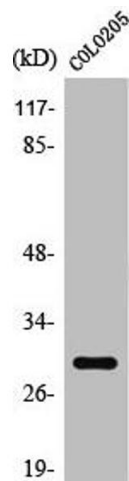
Preservative: Sodium azide

Precaution of Use: This product contains Sodium azide: a POISONOUS AND HAZARDOUS SUBSTANCE which should be handled by trained staff only.

Storage: -20 °C,-80 °C

Storage Comment: Upon receipt, store at -20°C or -80°C. Avoid repeated freeze.

Images



Western Blotting

Image 1. Western Blot analysis of COLO205 cells using Rab 6C Polyclonal Antibody