

Datasheet for ABIN7187959
anti-RHOD antibody (Internal Region)[Go to Product page](#)

1 Image

Overview

Quantity:	100 µg
Target:	RHOD
Binding Specificity:	Internal Region
Reactivity:	Human
Host:	Rabbit
Clonality:	Polyclonal
Conjugate:	This RHOD antibody is un-conjugated
Application:	Western Blotting (WB), ELISA

Product Details

Immunogen:	Synthesized peptide derived from the Internal region of Human Rho D.
Isotype:	IgG
Cross-Reactivity:	Human
Purification:	The antibody was affinity-purified from rabbit antiserum by affinity-chromatography using epitope-specific immunogen.

Target Details

Target:	RHOD
Alternative Name:	RHOD (RHOD Products)
Background:	ARHD antibody, Ras homolog D antibody, Ras homolog gene family member A antibody, Ras

Target Details

homolog gene family member D antibody, Rho antibody, RHO D antibody, Rho related GTP binding protein RhoD antibody, Rho related protein HP1 antibody, Rho-related GTP-binding protein RhoD antibody, Rho-related protein HP1 antibody, RHOD antibody, RHOD_HUMAN antibody, RhoHP1 antibody, RHOM antibody

UniProt: [O00212](#)

Application Details

Application Notes: WB:1:500-1:2000, ELISA:1:10000,

Restrictions: For Research Use only

Handling

Format: Liquid

Buffer: Liquid in PBS containing 50 % glycerol, 0.5 % BSA and 0.02 % sodium azide.

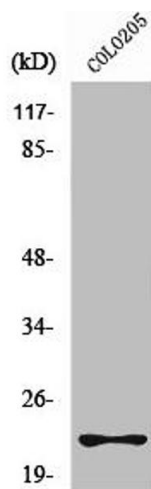
Preservative: Sodium azide

Precaution of Use: This product contains Sodium azide: a POISONOUS AND HAZARDOUS SUBSTANCE which should be handled by trained staff only.

Storage: -20 °C,-80 °C

Storage Comment: Upon receipt, store at -20°C or -80°C. Avoid repeated freeze.

Images



Western Blotting

Image 1. Western Blot analysis of A549 cells using Rho D Polyclonal Antibody