

Datasheet for ABIN7188023  
**anti-RRS1 antibody (Internal Region)**



[Go to Product page](#)

2 Images

## Overview

Quantity:	100 µg
Target:	RRS1
Binding Specificity:	Internal Region
Reactivity:	Human
Host:	Rabbit
Clonality:	Polyclonal
Conjugate:	This RRS1 antibody is un-conjugated
Application:	Western Blotting (WB), ELISA, Immunohistochemistry (IHC)

## Product Details

Immunogen:	Synthesized peptide derived from the Internal region of Human RRS1.
Isotype:	IgG
Cross-Reactivity:	Human, Mouse, Rat
Purification:	The antibody was affinity-purified from rabbit antiserum by affinity-chromatography using epitope-specific immunogen.

## Target Details

Target:	RRS1
Alternative Name:	RRS1 ( <a href="#">RRS1 Products</a> )
Background:	Homolog of yeast ribosome biogenesis regulator antibody, Homolog of yeast ribosome

## Target Details

biogenesis regulatory protein RRS1 antibody, KIAA0112 antibody, OTTHUMP00000227420 antibody, Ribosome biogenesis regulatory protein homolog antibody, Ribosome biogenesis regulatory protein RRS1 homolog antibody, RRR antibody, rrs1 antibody, RRS1 ribosome biogenesis regulator homolog (*S. cerevisiae*) antibody, RRS1\_HUMAN antibody

UniProt: [Q15050](#)

## Application Details

Application Notes: WB:1:500-1:2000, IHC:1:100-1:300, ELISA:1:10000,

Restrictions: For Research Use only

## Handling

Format: Liquid

Buffer: Liquid in PBS containing 50 % glycerol, 0.5 % BSA and 0.02 % sodium azide.

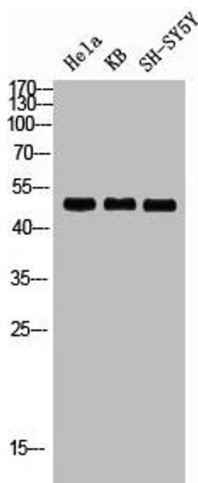
Preservative: Sodium azide

Precaution of Use: This product contains Sodium azide: a POISONOUS AND HAZARDOUS SUBSTANCE which should be handled by trained staff only.

Storage: -20 °C, -80 °C

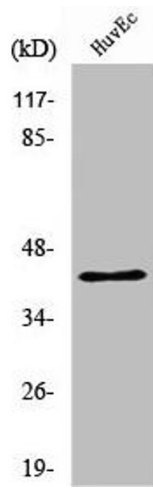
Storage Comment: Upon receipt, store at -20°C or -80°C. Avoid repeated freeze.

## Images



### Western Blotting

**Image 1.** Western blot analysis of HELA KB SH-SY5Y lysis using RRS1 antibody.



### Western Blotting

**Image 2.** Western Blot analysis of HuvEc cells using RRS1 Polyclonal Antibody