



[Go to Product page](#)

Datasheet for ABIN7188041

anti-KHDRBS1 antibody (Internal Region)

1 Image

Overview

Quantity:	100 µg
Target:	KHDRBS1
Binding Specificity:	Internal Region
Reactivity:	Human
Host:	Rabbit
Clonality:	Polyclonal
Conjugate:	This KHDRBS1 antibody is un-conjugated
Application:	Western Blotting (WB), ELISA

Product Details

Immunogen:	Synthesized peptide derived from the Internal region of Human Sam 68.
Isotype:	IgG
Cross-Reactivity:	Human, Mouse, Rat
Purification:	The antibody was affinity-purified from rabbit antiserum by affinity-chromatography using epitope-specific immunogen.

Target Details

Target:	KHDRBS1
Alternative Name:	KHDRBS1 (KHDRBS1 Products)
Background:	FLJ34027 antibody, GAP associated tyrosine phosphoprotein p62 antibody, GAP-associated

Target Details

tyrosine phosphoprotein p62 antibody, KH domain containing RNA binding signal transduction associated 1 antibody, KH domain-containing antibody, KHDR1_HUMAN antibody, Khdrbs1 antibody, p21 Ras GTPase activating protein associated p62 antibody, p21 Ras GTPase-activating protein-associated p62 antibody, p62 antibody, p68 antibody, RNA-binding antibody, Sam68 antibody, signal transduction-associated protein 1 antibody, Src associated in mitosis 68 kDa protein antibody, Src-associated in mitosis 68 kDa protein antibody

UniProt: [Q07666](#)

Pathways: [NF-kappaB Signaling](#), [Neurotrophin Signaling Pathway](#), [Autophagy](#)

Application Details

Application Notes: WB:1:500-1:2000, ELISA:1:10000,

Restrictions: For Research Use only

Handling

Format: Liquid

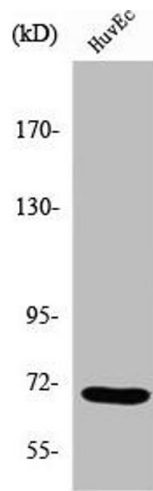
Buffer: Liquid in PBS containing 50 % glycerol, 0.5 % BSA and 0.02 % sodium azide.

Preservative: Sodium azide

Precaution of Use: This product contains Sodium azide: a POISONOUS AND HAZARDOUS SUBSTANCE which should be handled by trained staff only.

Storage: -20 °C, -80 °C

Storage Comment: Upon receipt, store at -20°C or -80°C. Avoid repeated freeze.



Western Blotting

Image 1. Western Blot analysis of COLO205 cells using Sam 68 Polyclonal Antibody