



[Go to Product page](#)

Datasheet for ABIN7188061

anti-Sema4a antibody (Internal Region)

1 Image

Overview

Quantity:	100 µg
Target:	Sema4a
Binding Specificity:	Internal Region
Reactivity:	Human
Host:	Rabbit
Clonality:	Polyclonal
Conjugate:	This Sema4a antibody is un-conjugated
Application:	Western Blotting (WB), ELISA, Immunohistochemistry (IHC), Immunofluorescence (IF)

Product Details

Immunogen:	Synthesized peptide derived from the Internal region of Human SEMA4A.
Isotype:	IgG
Cross-Reactivity:	Human, Monkey, Mouse, Rat
Purification:	The antibody was affinity-purified from rabbit antiserum by affinity-chromatography using epitope-specific immunogen.

Target Details

Target:	Sema4a
Alternative Name:	SEMA4A (Sema4a Products)
Background:	CORD10 antibody, RP11 54H19 2 antibody, RP35 antibody, SEM4A_HUMAN antibody, Sema B

Target Details

antibody, Sema domain immunoglobulin domain Ig transmembrane domain TM and short cytoplasmic domain 4A antibody, Sema domain immunoglobulin domain Ig transmembrane domain TM and short cytoplasmic domain semaphorin 4A antibody, Sema domain, immunoglobulin domain (Ig), transmembrane domain (TM) and short cytoplasmic domain, (semaphorin) antibody, Sema4a antibody, SEMAB antibody, Semaphorin 4A precursor antibody, Semaphorin B antibody, Semaphorin-4A antibody, Semaphorin-B antibody, SEMB antibody

UniProt: [Q9H3S1](#)

Application Details

Application Notes: WB:1:500-1:2000, IHC:1:100-1:300, IF:1:200-1:1000, ELISA:1:20000,

Restrictions: For Research Use only

Handling

Format: Liquid

Buffer: Liquid in PBS containing 50 % glycerol, 0.5 % BSA and 0.02 % sodium azide.

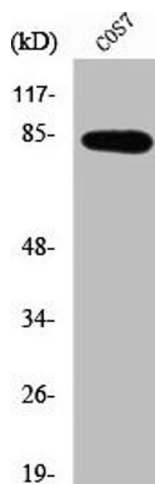
Preservative: Sodium azide

Precaution of Use: This product contains Sodium azide: a POISONOUS AND HAZARDOUS SUBSTANCE which should be handled by trained staff only.

Storage: -20 °C,-80 °C

Storage Comment: Upon receipt, store at -20°C or -80°C. Avoid repeated freeze.

Images



Western Blotting

Image 1. Western Blot analysis of Jurkat cells using SEMA4A Polyclonal Antibody