



[Go to Product page](#)

Datasheet for ABIN7188094

anti-SIAH1/2 antibody (Internal Region)

2 Images

Overview

Quantity:	100 µg
Target:	SIAH1/2
Binding Specificity:	Internal Region
Reactivity:	Human
Host:	Rabbit
Clonality:	Polyclonal
Conjugate:	This SIAH1/2 antibody is un-conjugated
Application:	Western Blotting (WB), Immunohistochemistry (IHC), Immunofluorescence (IF), ELISA

Product Details

Immunogen:	Synthesized peptide derived from the Internal region of Human Siah-1/2.
Isotype:	IgG
Cross-Reactivity:	Human, Mouse, Rat
Purification:	The antibody was affinity-purified from rabbit antiserum by affinity-chromatography using epitope-specific immunogen.

Target Details

Target:	SIAH1/2
Alternative Name:	SIAH1/SIAH2 (SIAH1/2 Products)
Background:	SIAH1, HUMSIAH, E3 ubiquitin-protein ligase SIAH1, Seven in absentia homolog 1, Siah-1, Siah-

Target Details

1a, SIAH2, E3 ubiquitin-protein ligase SIAH2, Seven in absentia homolog 2, Siah-2, hSiah2

UniProt: [Q8IUQ4, O43255](#)

Application Details

Application Notes: WB:1:500-1:2000, IHC:1:100-1:300, IF:1:200-1:1000, ELISA:1:10000,

Restrictions: For Research Use only

Handling

Format: Liquid

Buffer: Liquid in PBS containing 50 % glycerol, 0.5 % BSA and 0.02 % sodium azide.

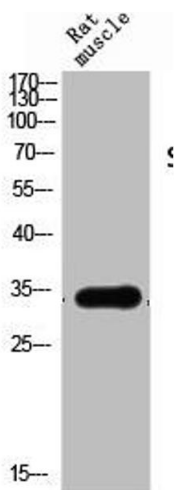
Preservative: Sodium azide

Precaution of Use: This product contains Sodium azide: a POISONOUS AND HAZARDOUS SUBSTANCE which should be handled by trained staff only.

Storage: -20 °C,-80 °C

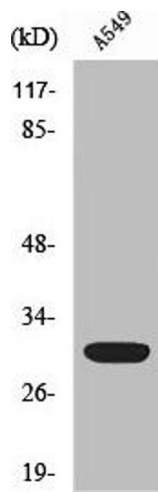
Storage Comment: Upon receipt, store at -20°C or -80°C. Avoid repeated freeze.

Images



Western Blotting

Image 1. Western Blot analysis of RAT-MUSCLE cells using Siah-1/2 Polyclonal Antibody



Western Blotting

Image 2. Western Blot analysis of HeLa cells using Siah-1/2 Polyclonal Antibody