

Datasheet for ABIN7188101
anti-Six5 antibody (Internal Region)[Go to Product page](#)

1 Image

Overview

Quantity:	100 µg
Target:	Six5 (SIX5)
Binding Specificity:	Internal Region
Reactivity:	Human
Host:	Rabbit
Clonality:	Polyclonal
Conjugate:	This Six5 antibody is un-conjugated
Application:	Western Blotting (WB), ELISA

Product Details

Immunogen:	Synthesized peptide derived from the Internal region of Human Six5.
Isotype:	IgG
Cross-Reactivity:	Human, Mouse
Purification:	The antibody was affinity-purified from rabbit antiserum by affinity-chromatography using epitope-specific immunogen.

Target Details

Target:	Six5 (SIX5)
Alternative Name:	SIX5 (SIX5 Products)
Background:	SIX5 antibody, DMAHP antibody, Homeobox protein SIX5 antibody, DM locus-associated

Target Details

homeodomain protein antibody, Sine oculis homeobox homolog 5 antibody

UniProt: [Q8N196](#)

Application Details

Application Notes: WB:1:500-1:2000, ELISA:1:40000,

Restrictions: For Research Use only

Handling

Format: Liquid

Buffer: Liquid in PBS containing 50 % glycerol, 0.5 % BSA and 0.02 % sodium azide.

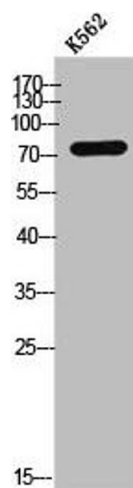
Preservative: Sodium azide

Precaution of Use: This product contains Sodium azide: a POISONOUS AND HAZARDOUS SUBSTANCE which should be handled by trained staff only.

Storage: -20 °C, -80 °C

Storage Comment: Upon receipt, store at -20°C or -80°C. Avoid repeated freeze.

Images



Western Blotting

Image 1. Western Blot analysis of K562 cells using Six5 Polyclonal Antibody