

Datasheet for ABIN7188104
anti-SLC17A2 antibody (Internal Region)[Go to Product page](#)

1 Image

Overview

Quantity:	100 µg
Target:	SLC17A2
Binding Specificity:	Internal Region
Reactivity:	Human
Host:	Rabbit
Clonality:	Polyclonal
Conjugate:	This SLC17A2 antibody is un-conjugated
Application:	Western Blotting (WB), ELISA

Product Details

Immunogen:	Synthesized peptide derived from the Internal region of Human SLC17A2.
Isotype:	IgG
Cross-Reactivity:	Human, Mouse
Purification:	The antibody was affinity-purified from rabbit antiserum by affinity-chromatography using epitope-specific immunogen.

Target Details

Target:	SLC17A2
Alternative Name:	SLC17A2 (SLC17A2 Products)
Background:	Na(+)/PI cotransporter 3 antibody, NPT3 antibody, NPT3_HUMAN antibody, SLC17A2 antibody,

Target Details

Sodium phosphate transporter 3 antibody, Sodium-dependent phosphate transport protein 3 antibody, Sodium/phosphate cotransporter 3 antibody, Solute carrier family 17 (sodium phosphate), member 2 antibody, Solute carrier family 17 (vesicular glutamate transporter), member 2 antibody, Solute carrier family 17 member 2 antibody

UniProt: [O00624](#)

Application Details

Application Notes: WB:1:500-1:2000, ELISA:1:40000,

Restrictions: For Research Use only

Handling

Format: Liquid

Buffer: Liquid in PBS containing 50 % glycerol, 0.5 % BSA and 0.02 % sodium azide.

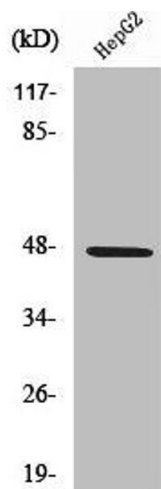
Preservative: Sodium azide

Precaution of Use: This product contains Sodium azide: a POISONOUS AND HAZARDOUS SUBSTANCE which should be handled by trained staff only.

Storage: -20 °C,-80 °C

Storage Comment: Upon receipt, store at -20°C or -80°C. Avoid repeated freeze.

Images



Western Blotting

Image 1. Western Blot analysis of HepG2 cells using SLC17A2 Polyclonal Antibody