

Datasheet for ABIN7188105
anti-SLC43A1 antibody (Internal Region)[Go to Product page](#)

1 Image

Overview

Quantity:	100 µg
Target:	SLC43A1
Binding Specificity:	Internal Region
Reactivity:	Human
Host:	Rabbit
Clonality:	Polyclonal
Conjugate:	This SLC43A1 antibody is un-conjugated
Application:	Western Blotting (WB), ELISA

Product Details

Immunogen:	Synthesized peptide derived from the Internal region of Human SLC43A1.
Isotype:	IgG
Cross-Reactivity:	Human
Purification:	The antibody was affinity-purified from rabbit antiserum by affinity-chromatography using epitope-specific immunogen.

Target Details

Target:	SLC43A1
Alternative Name:	SLC43A1 (SLC43A1 Products)
Background:	L type amino acid transporter 3 antibody, L-type amino acid transporter 3 antibody, Large

Target Details

neutral amino acids transporter small subunit 3 antibody, LAT3_HUMAN antibody, PB39 antibody, POV1 antibody, Prostate cancer overexpressed gene 1 protein antibody, R00504 antibody, SLC43A1 antibody, Solute carrier family 43 member 1 antibody

UniProt: [O75387](#)

Application Details

Application Notes: WB:1:500-1:2000, ELISA:1:20000,

Restrictions: For Research Use only

Handling

Format: Liquid

Buffer: Liquid in PBS containing 50 % glycerol, 0.5 % BSA and 0.02 % sodium azide.

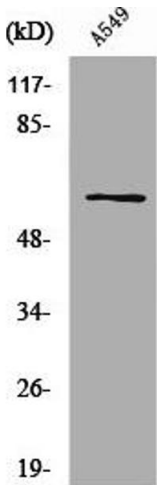
Preservative: Sodium azide

Precaution of Use: This product contains Sodium azide: a POISONOUS AND HAZARDOUS SUBSTANCE which should be handled by trained staff only.

Storage: -20 °C,-80 °C

Storage Comment: Upon receipt, store at -20°C or -80°C. Avoid repeated freeze.

Images



Western Blotting

Image 1. Western Blot analysis of Jurkat cells using SLC43A1 Polyclonal Antibody