



[Go to Product page](#)

Datasheet for ABIN7188137

anti-SFTP A2 antibody (Internal Region)

1 Image

Overview

Quantity:	100 µg
Target:	SFTP A2
Binding Specificity:	Internal Region
Reactivity:	Human
Host:	Rabbit
Clonality:	Polyclonal
Conjugate:	This SFTP A2 antibody is un-conjugated
Application:	Western Blotting (WB), ELISA

Product Details

Immunogen:	Synthesized peptide derived from the Internal region of Human SP-A.
Isotype:	IgG
Cross-Reactivity:	Human, Mouse, Rat
Purification:	The antibody was affinity-purified from rabbit antiserum by affinity-chromatography using epitope-specific immunogen.

Target Details

Target:	SFTP A2
Alternative Name:	SFTP A2 (SFTP A2 Products)
Background:	SFTP A2 antibody, COLEC5 antibody, PSAP antibody, SFTP1 antibody, SFTP A antibody,

Target Details

SFTPA2B antibody, Pulmonary surfactant-associated protein A2 antibody, PSP-A antibody, PSPA antibody, SP-A antibody, SP-A2 antibody, 35 kDa pulmonary surfactant-associated protein antibody, Alveolar proteinosis protein antibody, Collectin-5 antibody

UniProt: [Q8IWL1](#)

Application Details

Application Notes: WB:1:500-1:2000, ELISA:1:20000,

Restrictions: For Research Use only

Handling

Format: Liquid

Buffer: Liquid in PBS containing 50 % glycerol, 0.5 % BSA and 0.02 % sodium azide.

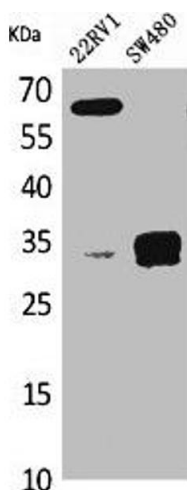
Preservative: Sodium azide

Precaution of Use: This product contains Sodium azide: a POISONOUS AND HAZARDOUS SUBSTANCE which should be handled by trained staff only.

Storage: -20 °C,-80 °C

Storage Comment: Upon receipt, store at -20°C or -80°C. Avoid repeated freeze.

Images



Western Blotting

Image 1. Western Blot analysis of K562 mouse lung cells using SP-A Polyclonal Antibody