

Datasheet for ABIN7188233  
**anti-Tbpl2 antibody (Internal Region)**[Go to Product page](#)

## 1 Image

## Overview

Quantity:	100 µg
Target:	Tbpl2
Binding Specificity:	Internal Region
Reactivity:	Human
Host:	Rabbit
Clonality:	Polyclonal
Conjugate:	This Tbpl2 antibody is un-conjugated
Application:	Western Blotting (WB), Immunohistochemistry (IHC), ELISA

## Product Details

Immunogen:	Synthesized peptide derived from the Internal region of Human TBPL2.
Isotype:	IgG
Cross-Reactivity:	Human
Purification:	The antibody was affinity-purified from rabbit antiserum by affinity-chromatography using epitope-specific immunogen.

## Target Details

Target:	Tbpl2
Alternative Name:	TBPL2 ( <a href="#">Tbpl2 Products</a> )
Background:	TATA binding protein 2 antibody, TATA box binding protein like 2 antibody, TATA box-binding

## Target Details

protein-like 2 antibody, TATA box-binding protein-like protein 2 antibody, TATA box-binding protein-related factor 3 antibody, TATA-binding protein 2 antibody, TBP related factor 3 antibody, TBP-like protein 2 antibody, TBP-related factor 3 antibody, Tbp12 antibody, TBPL2\_HUMAN antibody, TRF3 antibody

UniProt: [Q6SJ96](#)

Pathways: [Protein targeting to Nucleus](#), [Platelet-derived growth Factor Receptor Signaling](#)

## Application Details

Application Notes: WB:1:500-1:2000, IHC:1:100-1:300, ELISA:1:5000,

Restrictions: For Research Use only

## Handling

Format: Liquid

Buffer: Liquid in PBS containing 50 % glycerol, 0.5 % BSA and 0.02 % sodium azide.

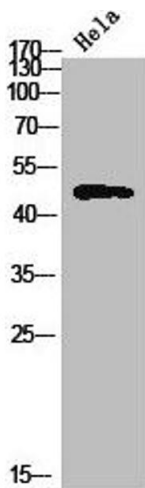
Preservative: Sodium azide

Precaution of Use: This product contains Sodium azide: a POISONOUS AND HAZARDOUS SUBSTANCE which should be handled by trained staff only.

Storage: -20 °C,-80 °C

Storage Comment: Upon receipt, store at -20°C or -80°C. Avoid repeated freeze.

## Images



### Western Blotting

**Image 1.** Western Blot analysis of HeLa cells using TBPL2 Polyclonal Antibody