



[Go to Product page](#)

Datasheet for ABIN718826

anti-PNLIPRP1 antibody (AA 375-467)

1 Image

Overview

Quantity:	100 µL
Target:	PNLIPRP1
Binding Specificity:	AA 375-467
Reactivity:	Rat
Host:	Rabbit
Clonality:	Polyclonal
Conjugate:	This PNLIPRP1 antibody is un-conjugated
Application:	ELISA, Western Blotting (WB), Immunofluorescence (Cultured Cells) (IF (cc)), Immunofluorescence (Paraffin-embedded Sections) (IF (p)), Immunohistochemistry (Frozen Sections) (IHC (fro)), Immunohistochemistry (Paraffin-embedded Sections) (IHC (p))

Product Details

Immunogen:	KLH conjugated synthetic peptide derived from human PLRP1/PNLIPRP1
Isotype:	IgG
Cross-Reactivity:	Rat
Predicted Reactivity:	Human, Mouse, Dog, Cow, Sheep, Pig, Horse, Rabbit
Purification:	Purified by Protein A.

Target Details

Target:	PNLIPRP1
---------	----------

Target Details

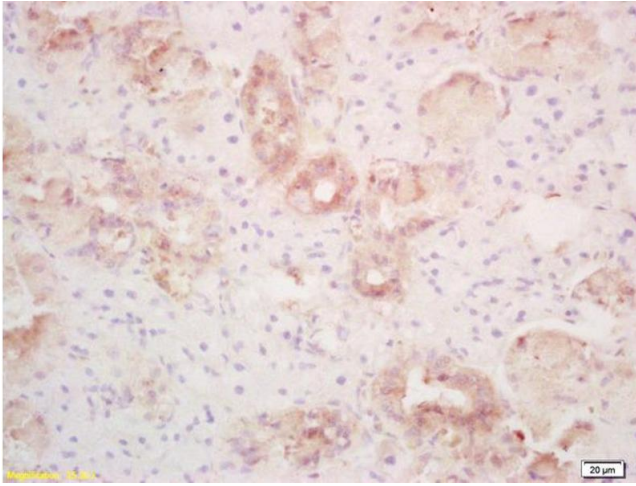
Alternative Name:	PLRP1 (PNLIPRP1 Products)
Background:	Synonyms: PLRP1, Inactive pancreatic lipase-related protein 1, PL-RP1, PNLIPRP1 Background: May function as inhibitor of dietary triglyceride digestion. Lacks detectable lipase activity towards triglycerides, diglycerides, phosphatidylcholine, galactolipids or cholesterol esters (in vitro) (By similarity).
Gene ID:	5407
UniProt:	P54315

Application Details

Application Notes:	WB 1:300-5000 ELISA 1:500-1000 IHC-P 1:200-400 IHC-F 1:100-500 IF(IHC-P) 1:50-200 IF(IHC-F) 1:50-200 IF(ICC) 1:50-200
Restrictions:	For Research Use only

Handling

Format:	Liquid
Concentration:	1 µg/µL
Buffer:	0.01M TBS(pH 7.4) with 1 % BSA, 0.02 % Proclin300 and 50 % Glycerol.
Preservative:	ProClin
Precaution of Use:	This product contains ProClin: a POISONOUS AND HAZARDOUS SUBSTANCE, which should be handled by trained staff only.
Storage:	4 °C,-20 °C
Storage Comment:	Shipped at 4°C. Store at -20°C for one year. Avoid repeated freeze/thaw cycles.
Expiry Date:	12 months



Immunohistochemistry

Image 1. Formalin-fixed and paraffin embedded rat thyroid labeled with Rabbit Anti PLRP1/PNLIPRP1 Polyclonal Antibody, Unconjugated (ABIN718826) at 1:200 followed by conjugation to the secondary antibody and DAB staining