



Datasheet for ABIN7188305
anti-TOP3A antibody (Internal Region)



[Go to Product page](#)

1 Image

Overview

Quantity:	100 µg
Target:	TOP3A
Binding Specificity:	Internal Region
Reactivity:	Human
Host:	Rabbit
Clonality:	Polyclonal
Conjugate:	This TOP3A antibody is un-conjugated
Application:	Western Blotting (WB), ELISA

Product Details

Immunogen:	Synthesized peptide derived from the Internal region of Human Topo IIIalpha. at AA range: 350-430
Isotype:	IgG
Cross-Reactivity:	Human, Mouse
Purification:	The antibody was affinity-purified from rabbit antiserum by affinity-chromatography using epitope-specific immunogen.

Target Details

Target:	TOP3A
Alternative Name:	TOP3A (TOP3A Products)

Target Details

Background: DNA topoisomerase 3 alpha antibody, DNA topoisomerase 3-alpha antibody, DNA topoisomerase III alpha antibody, TOP 3 antibody, TOP3 antibody, TOP3A antibody, TOP3A_HUMAN antibody, topo III-alpha antibody, topoisomerase (DNA) III alpha antibody, topoisomerase (DNA) III antibody, topoisomerase III alpha antibody, ZGRF7 antibody, zinc finger, GRF-type containing 7 antibody

UniProt: [Q13472](#)

Pathways: [DNA Damage Repair](#)

Application Details

Application Notes: WB:1:500-1:2000, ELISA:1:10000,

Restrictions: For Research Use only

Handling

Format: Liquid

Buffer: Liquid in PBS containing 50 % glycerol, 0.5 % BSA and 0.02 % sodium azide.

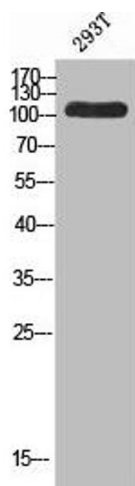
Preservative: Sodium azide

Precaution of Use: This product contains Sodium azide: a POISONOUS AND HAZARDOUS SUBSTANCE which should be handled by trained staff only.

Storage: -20 °C,-80 °C

Storage Comment: Upon receipt, store at -20°C or -80°C. Avoid repeated freeze.

Images



Western Blotting

Image 1. Western blot analysis of 293T using Topo III α antibody. Antibody was diluted at 1:500. Secondary antibody was diluted at 1:20000