



[Go to Product page](#)

Datasheet for ABIN7188335

anti-PRSS1 antibody (Internal Region)

1 Image

Overview

Quantity:	100 µg
Target:	PRSS1
Binding Specificity:	Internal Region
Reactivity:	Human
Host:	Rabbit
Clonality:	Polyclonal
Conjugate:	This PRSS1 antibody is un-conjugated
Application:	Western Blotting (WB), ELISA

Product Details

Immunogen:	Synthesized peptide derived from the Internal region of Human Trypsin-1.
Isotype:	IgG
Cross-Reactivity:	Human
Purification:	The antibody was affinity-purified from rabbit antiserum by affinity-chromatography using epitope-specific immunogen.

Target Details

Target:	PRSS1
Alternative Name:	PRSS1 (PRSS1 Products)
Background:	Alpha-trypsin chain 2 antibody, Beta-trypsin antibody, Cationic trypsinogen antibody, Digestive

Target Details

zymogen antibody, Nonfunctional trypsin 1 antibody, Prss1 antibody, Serine protease 1 antibody, TCR V beta 4.1 antibody, TRP1 antibody, TRY1 antibody, TRY1_HUMAN antibody, TRY4 antibody, TRYP1 antibody, Trypsin I antibody, Trypsinogen 1 antibody, Trypsinogen A antibody

UniProt: [P07477](#)

Application Details

Application Notes: WB:1:500-1:2000, ELISA:1:10000,

Restrictions: For Research Use only

Handling

Format: Liquid

Buffer: Liquid in PBS containing 50 % glycerol, 0.5 % BSA and 0.02 % sodium azide.

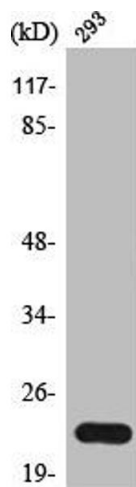
Preservative: Sodium azide

Precaution of Use: This product contains Sodium azide: a POISONOUS AND HAZARDOUS SUBSTANCE which should be handled by trained staff only.

Storage: -20 °C,-80 °C

Storage Comment: Upon receipt, store at -20°C or -80°C. Avoid repeated freeze.

Images



Western Blotting

Image 1. Western Blot analysis of 293 cells using Trypsin-1 Polyclonal Antibody