



[Go to Product page](#)

Datasheet for ABIN7188345

anti-TUSC2 antibody (Internal Region)

1 Image

Overview

Quantity:	100 µg
Target:	TUSC2
Binding Specificity:	Internal Region
Reactivity:	Human
Host:	Rabbit
Clonality:	Polyclonal
Conjugate:	This TUSC2 antibody is un-conjugated
Application:	Western Blotting (WB), ELISA, Immunohistochemistry (IHC)

Product Details

Immunogen:	Synthesized peptide derived from the Internal region of Human TUSC2.
Isotype:	IgG
Cross-Reactivity:	Human, Mouse
Purification:	The antibody was affinity-purified from rabbit antiserum by affinity-chromatography using epitope-specific immunogen.

Target Details

Target:	TUSC2
Alternative Name:	TUSC2 (TUSC2 Products)
Background:	C3orf11 antibody, Fus-1 protein antibody, FUS1 antibody, Fusion 1 protein antibody, LGCC

Target Details

antibody, PAP antibody, PDAP2 antibody, PDGFA associated protein 2 antibody, PDGFA-associated protein 2 antibody, Tumor suppressor candidate 2 antibody, TUSC 2 antibody, Tusc2 antibody, TUSC2_HUMAN antibody

UniProt: [075896](#)

Application Details

Application Notes: WB:1:500-1:2000, IHC:1:100-1:300, ELISA:1:5000,

Restrictions: For Research Use only

Handling

Format: Liquid

Buffer: Liquid in PBS containing 50 % glycerol, 0.5 % BSA and 0.02 % sodium azide.

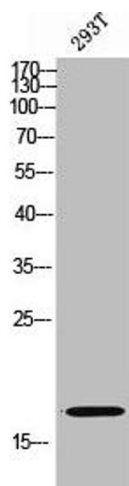
Preservative: Sodium azide

Precaution of Use: This product contains Sodium azide: a POISONOUS AND HAZARDOUS SUBSTANCE which should be handled by trained staff only.

Storage: -20 °C,-80 °C

Storage Comment: Upon receipt, store at -20°C or -80°C. Avoid repeated freeze.

Images



Western Blotting

Image 1. Western Blot analysis of 293T cells using TUSC2 Polyclonal Antibody