

Datasheet for ABIN7188423
anti-XRCC3 antibody (Internal Region)[Go to Product page](#)

1 Image

Overview

Quantity:	100 µg
Target:	XRCC3
Binding Specificity:	Internal Region
Reactivity:	Human
Host:	Rabbit
Clonality:	Polyclonal
Application:	Western Blotting (WB), ELISA, Immunohistochemistry (IHC)

Product Details

Immunogen:	Synthesized peptide derived from the Internal region of Human XRCC3.
Isotype:	IgG
Cross-Reactivity:	Human
Purification:	The antibody was affinity-purified from rabbit antiserum by affinity-chromatography using epitope-specific immunogen.

Target Details

Target:	XRCC3
Alternative Name:	XRCC3 (XRCC3 Products)
Background:	CMM6 antibody, DNA repair protein XRCC3 antibody, RAD51 like antibody, X ray repair complementing defective repair in Chinese hamster antibody, X ray repair complementing defective repair in Chinese hamster cells 3 antibody, X ray repair cross complementing protein

Target Details

	3 antibody, X-ray repair cross-complementing protein 3 antibody, XRCC 3 antibody, XRCC3 antibody, XRCC3_HUMAN antibody
UniProt:	O43542
Pathways:	DNA Damage Repair

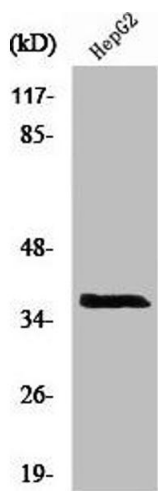
Application Details

Application Notes:	WB:1:500-1:2000, IHC:1:100-1:300, ELISA:1:10000,
Restrictions:	For Research Use only

Handling

Format:	Liquid
Buffer:	Liquid in PBS containing 50 % glycerol, 0.5 % BSA and 0.02 % sodium azide.
Preservative:	Sodium azide
Precaution of Use:	This product contains Sodium azide: a POISONOUS AND HAZARDOUS SUBSTANCE which should be handled by trained staff only.
Storage:	-20 °C,-80 °C
Storage Comment:	Upon receipt, store at -20°C or -80°C. Avoid repeated freeze.

Images



Western Blotting

Image 1. Western Blot analysis of HepG2 cells using XRCC3 Polyclonal Antibody