



[Go to Product page](#)

Datasheet for ABIN7188523
anti-PLAP antibody (N-Term)

2 Images

Overview

Quantity:	100 µg
Target:	PLAP (ALPP)
Binding Specificity:	N-Term
Reactivity:	Human
Host:	Rabbit
Clonality:	Polyclonal
Conjugate:	This PLAP antibody is un-conjugated
Application:	Western Blotting (WB), ELISA

Product Details

Immunogen:	Synthesized peptide derived from the N-terminal region of Human ALPP/ALPPL2.
Isotype:	IgG
Cross-Reactivity:	Human, Mouse
Purification:	The antibody was affinity-purified from rabbit antiserum by affinity-chromatography using epitope-specific immunogen.

Target Details

Target:	PLAP (ALPP)
Alternative Name:	ALPP/ALPPL2 (ALPP Products)
Background:	ALPP, PLAP, Alkaline phosphatase, placental type, Alkaline phosphatase Regan isozyme,

Target Details

Placental alkaline phosphatase 1, PLAP-1, ALPPL2, ALPPL, Alkaline phosphatase, placental-like

UniProt: [P05187](#), [P10696](#)

Application Details

Application Notes: WB:1:500-1:2000, ELISA:1:20000,

Restrictions: For Research Use only

Handling

Format: Liquid

Buffer: Liquid in PBS containing 50 % glycerol, 0.5 % BSA and 0.02 % sodium azide.

Preservative: Sodium azide

Precaution of Use: This product contains Sodium azide: a POISONOUS AND HAZARDOUS SUBSTANCE which should be handled by trained staff only.

Storage: -20 °C,-80 °C

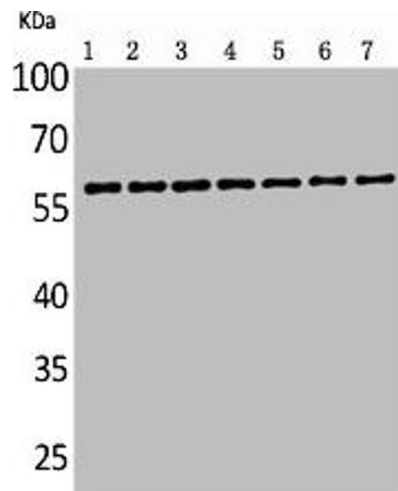
Storage Comment: Upon receipt, store at -20°C or -80°C. Avoid repeated freeze.

Images



Western Blotting

Image 1. Western Blot analysis of 293 cells using ALPP/ALPPL2 Polyclonal Antibody.



Western Blotting

Image 2. Western Blot analysis of customer's sample using ALPP/ALPPL2 Polyclonal Antibody.