

Datasheet for ABIN7188529
anti-ANG antibody (N-Term)[Go to Product page](#)

1 Image

Overview

Quantity:	100 µg
Target:	ANG
Binding Specificity:	N-Term
Reactivity:	Human
Host:	Rabbit
Clonality:	Polyclonal
Conjugate:	This ANG antibody is un-conjugated
Application:	Western Blotting (WB), ELISA

Product Details

Immunogen:	Synthesized peptide derived from the N-terminal region of Human ANG I.
Isotype:	IgG
Cross-Reactivity:	Human
Purification:	The antibody was affinity-purified from rabbit antiserum by affinity-chromatography using epitope-specific immunogen.

Target Details

Target:	ANG
Alternative Name:	ANG (ANG Products)
Background:	ALS9 antibody, AMYOTROPHIC LATERAL SCLEROSIS antibody, ANG 1 antibody, ANG antibody,

Target Details

ANG I antibody, ANG1 antibody, ANGI antibody, ANGI_HUMAN antibody, Angiogenin antibody, Angiogenin ribonuclease RNase A family, 5 antibody, Epididymis luminal protein 168 antibody, HEL168 antibody, MGC22466 antibody, MGC71966 antibody, Ribonuclease 5 antibody, Ribonuclease RNase A Family 5 antibody, RNase 5 antibody, RNASE4 antibody, RNASE5 antibody

UniProt: [P03950](#)

Application Details

Application Notes: WB:1:500-1:2000, ELISA:1:10000,

Restrictions: For Research Use only

Handling

Format: Liquid

Buffer: Liquid in PBS containing 50 % glycerol, 0.5 % BSA and 0.02 % sodium azide.

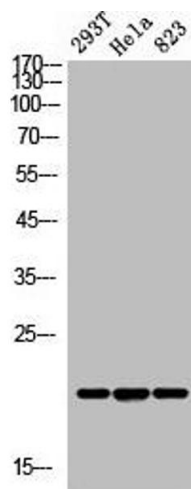
Preservative: Sodium azide

Precaution of Use: This product contains Sodium azide: a POISONOUS AND HAZARDOUS SUBSTANCE which should be handled by trained staff only.

Storage: -20 °C,-80 °C

Storage Comment: Upon receipt, store at -20°C or -80°C. Avoid repeated freeze.

Images



Western Blotting

Image 1. Western Blot analysis of 293T HeLa 823 cells using ANG I Polyclonal Antibody