



[Go to Product page](#)

Datasheet for ABIN7188566  
**anti-BUD31 antibody (N-Term)**

1 Image

### Overview

Quantity:	100 µg
Target:	BUD31
Binding Specificity:	N-Term
Reactivity:	Human
Host:	Rabbit
Clonality:	Polyclonal
Conjugate:	This BUD31 antibody is un-conjugated
Application:	Western Blotting (WB), ELISA, Immunohistochemistry (IHC)

### Product Details

Immunogen:	Synthesized peptide derived from the N-terminal region of Human BUD31.
Isotype:	IgG
Cross-Reactivity:	Human, Mouse, Rat
Purification:	The antibody was affinity-purified from rabbit antiserum by affinity-chromatography using epitope-specific immunogen.

### Target Details

Target:	BUD31
Alternative Name:	BUD31 ( <a href="#">BUD31 Products</a> )
Background:	Bud31 antibody, BUD31 homolog ( <i>S. cerevisiae</i> ) antibody, BUD31_HUMAN antibody, Cwc14

## Target Details

antibody, EDG 2 antibody, EDG2 antibody, fSAP17 antibody, Functional spliceosome associated protein 17 antibody, G10 antibody, G10 maternal transcript homolog antibody, Maternal G10 transcript antibody, Protein BUD31 homolog antibody, Protein EDG-2 antibody, Protein G10 homolog antibody, YCR063W antibody

UniProt: [P41223](#)

## Application Details

Application Notes: WB:1:500-1:2000, IHC:1:100-1:300, ELISA:1:20000,

Restrictions: For Research Use only

## Handling

Format: Liquid

Buffer: Liquid in PBS containing 50 % glycerol, 0.5 % BSA and 0.02 % sodium azide.

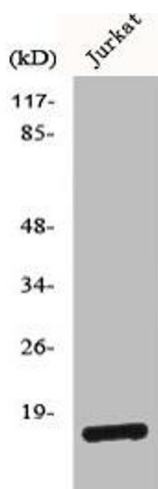
Preservative: Sodium azide

Precaution of Use: This product contains Sodium azide: a POISONOUS AND HAZARDOUS SUBSTANCE which should be handled by trained staff only.

Storage: -20 °C,-80 °C

Storage Comment: Upon receipt, store at -20°C or -80°C. Avoid repeated freeze.

## Images



### Western Blotting

**Image 1.** Western Blot analysis of Jurkat cells using BUD31 Polyclonal Antibody