

Datasheet for ABIN7188580
anti-CARD6 antibody (N-Term)[Go to Product page](#)

1 Image

Overview

Quantity:	100 µg
Target:	CARD6
Binding Specificity:	N-Term
Reactivity:	Human
Host:	Rabbit
Clonality:	Polyclonal
Conjugate:	This CARD6 antibody is un-conjugated
Application:	ELISA, Immunohistochemistry (IHC), Western Blotting (WB), Immunofluorescence (IF)

Product Details

Immunogen:	Synthesized peptide derived from the N-terminal region of Human CARD 6.
Isotype:	IgG
Cross-Reactivity:	Human
Purification:	The antibody was affinity-purified from rabbit antiserum by affinity-chromatography using epitope-specific immunogen.

Target Details

Target:	CARD6
Alternative Name:	CARD6 (CARD6 Products)
Background:	CARD 6 antibody, CARD containing inhibitor of Nod1 and Cardiac-induced NF kB activation

Target Details

antibody, CARD6 antibody, CARD6_HUMAN antibody, Caspase recruitment domain family, member 6 antibody, Caspase recruitment domain protein 6 antibody, Caspase recruitment domain-containing protein 6 antibody, CINCIN1 antibody, D730008L15 antibody

UniProt: [Q9BX69](#)

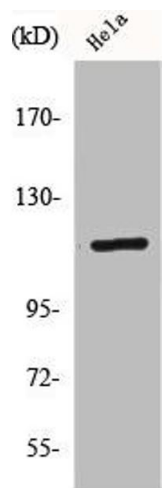
Application Details

Application Notes: WB:1:500-1:2000, IHC:1:100-1:300, IF:1:200-1:1000, ELISA:1:10000,
Restrictions: For Research Use only

Handling

Format: Liquid
Buffer: Liquid in PBS containing 50 % glycerol, 0.5 % BSA and 0.02 % sodium azide.
Preservative: Sodium azide
Precaution of Use: This product contains Sodium azide: a POISONOUS AND HAZARDOUS SUBSTANCE which should be handled by trained staff only.
Storage: -20 °C,-80 °C
Storage Comment: Upon receipt, store at -20°C or -80°C. Avoid repeated freeze.

Images



Western Blotting

Image 1. Western Blot analysis of HeLa cells using CARD 6 Polyclonal Antibody