



[Go to Product page](#)

Datasheet for ABIN7188594
anti-CCKBR antibody (N-Term)

1 Image

Overview

Quantity:	100 µg
Target:	CCKBR
Binding Specificity:	N-Term
Reactivity:	Human
Host:	Rabbit
Clonality:	Polyclonal
Conjugate:	This CCKBR antibody is un-conjugated
Application:	Western Blotting (WB), ELISA

Product Details

Immunogen:	Synthesized peptide derived from the N-terminal region of Human CCK-BR.
Isotype:	IgG
Cross-Reactivity:	Human, Monkey, Mouse, Rat
Purification:	The antibody was affinity-purified from rabbit antiserum by affinity-chromatography using epitope-specific immunogen.

Target Details

Target:	CCKBR
Alternative Name:	CCKBR (CCKBR Products)
Background:	CCK B antibody, CCK B receptor antibody, CCK BR antibody, CCK-B receptor antibody, CCK-BR

Target Details

antibody, CCK2 R antibody, CCK2 receptor antibody, CCK2-R antibody, CCKB antibody, CCKB receptor antibody, CCKBR antibody, CCKR Type B antibody, CCKRB antibody, Cholecystokinin 2 receptor antibody, Cholecystokinin B receptor antibody, Cholecystokinin-2 receptor antibody, Cholecystokinin2 receptor antibody, CholecystokininB receptor antibody, GASR antibody, GASR_HUMAN antibody, Gastrin receptor antibody, Gastrin/cholecystokinin type B receptor antibody, Gastrin\cholecystokinin brain receptor antibody

UniProt: [P32239](#)

Pathways: [Positive Regulation of Peptide Hormone Secretion](#), [Feeding Behaviour](#)

Application Details

Application Notes: WB:1:500-1:2000, ELISA:1:20000,

Restrictions: For Research Use only

Handling

Format: Liquid

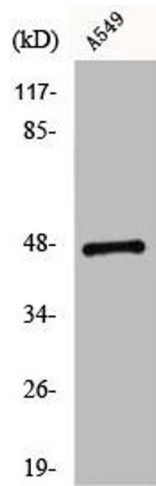
Buffer: Liquid in PBS containing 50 % glycerol, 0.5 % BSA and 0.02 % sodium azide.

Preservative: Sodium azide

Precaution of Use: This product contains Sodium azide: a POISONOUS AND HAZARDOUS SUBSTANCE which should be handled by trained staff only.

Storage: -20 °C,-80 °C

Storage Comment: Upon receipt, store at -20°C or -80°C. Avoid repeated freeze.



Western Blotting

Image 1. Western Blot analysis of K562 cells using CCK-BR Polyclonal Antibody