



[Go to Product page](#)

Datasheet for ABIN7188606  
**anti-RHAG antibody (N-Term)**

1 Image

### Overview

Quantity:	100 µg
Target:	RHAG
Binding Specificity:	N-Term
Reactivity:	Human
Host:	Rabbit
Clonality:	Polyclonal
Conjugate:	This RHAG antibody is un-conjugated
Application:	Western Blotting (WB), ELISA

### Product Details

Immunogen:	Synthesized peptide derived from the N-terminal region of Human CD241.
Isotype:	IgG
Cross-Reactivity:	Human
Purification:	The antibody was affinity-purified from rabbit antiserum by affinity-chromatography using epitope-specific immunogen.

### Target Details

Target:	RHAG
Alternative Name:	RHAG ( <a href="#">RHAG Products</a> )
Background:	RHAG antibody, RH50 antibody, Ammonium transporter Rh type A antibody, Erythrocyte

## Target Details

membrane glycoprotein Rh50 antibody, Erythrocyte plasma membrane 50 kDa glycoprotein antibody, Rh50A antibody, Rhesus blood group family type A glycoprotein antibody, Rh family type A glycoprotein antibody, Rh type A glycoprotein antibody, Rhesus blood group-associated ammonia channel antibody, Rhesus blood group-associated glycoprotein antibody, CD antigen CD241 antibody

UniProt: [Q02094](#)

## Application Details

Application Notes: WB:1:500-1:2000, ELISA:1:20000,

Restrictions: For Research Use only

## Handling

Format: Liquid

Buffer: Liquid in PBS containing 50 % glycerol, 0.5 % BSA and 0.02 % sodium azide.

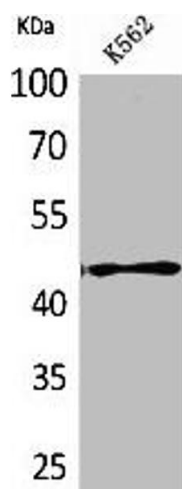
Preservative: Sodium azide

Precaution of Use: This product contains Sodium azide: a POISONOUS AND HAZARDOUS SUBSTANCE which should be handled by trained staff only.

Storage: -20 °C,-80 °C

Storage Comment: Upon receipt, store at -20°C or -80°C. Avoid repeated freeze.

## Images



### Western Blotting

**Image 1.** Western Blot analysis of K562 cells using CD241 Polyclonal Antibody