



[Go to Product page](#)

Datasheet for ABIN7188611
anti-CDC42EP2 antibody (N-Term)

1 Image

Overview

Quantity:	100 µg
Target:	CDC42EP2
Binding Specificity:	N-Term
Reactivity:	Human
Host:	Rabbit
Clonality:	Polyclonal
Conjugate:	This CDC42EP2 antibody is un-conjugated
Application:	ELISA, Western Blotting (WB), Immunohistochemistry (IHC)

Product Details

Immunogen:	Synthesized peptide derived from the N-terminal region of Human Cdc42EP2.
Isotype:	IgG
Cross-Reactivity:	Human, Mouse, Rat
Purification:	The antibody was affinity-purified from rabbit antiserum by affinity-chromatography using epitope-specific immunogen.

Target Details

Target:	CDC42EP2
Alternative Name:	CDC42EP2 (CDC42EP2 Products)
Background:	Binder of Rho GTPases 1 antibody, BORG1 antibody, BORG1_HUMAN antibody, CDC42 effector

Target Details

protein (Rho GTPase binding) 2 antibody, Cdc42 effector protein 2 antibody, Cdc42ep2 antibody, CEP2 antibody, CRIB-containing BOGR1 protein antibody

UniProt: [O14613](#)

Pathways: [Regulation of Actin Filament Polymerization](#)

Application Details

Application Notes: WB:1:500-1:2000, IHC:1:100-1:300, ELISA:1:40000,

Restrictions: For Research Use only

Handling

Format: Liquid

Buffer: Liquid in PBS containing 50 % glycerol, 0.5 % BSA and 0.02 % sodium azide.

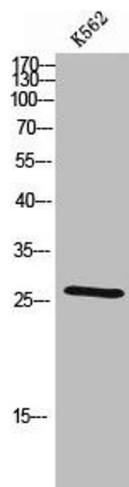
Preservative: Sodium azide

Precaution of Use: This product contains Sodium azide: a POISONOUS AND HAZARDOUS SUBSTANCE which should be handled by trained staff only.

Storage: -20 °C,-80 °C

Storage Comment: Upon receipt, store at -20°C or -80°C. Avoid repeated freeze.

Images



Western Blotting

Image 1. Western Blot analysis of K562 cells using Cdc42EP2 Polyclonal Antibody