



[Go to Product page](#)

Datasheet for ABIN7188652
anti-Contactin 1 antibody (N-Term)

1 Image

Overview

Quantity:	100 µg
Target:	Contactin 1 (CNTN1)
Binding Specificity:	N-Term
Reactivity:	Human
Host:	Rabbit
Clonality:	Polyclonal
Conjugate:	This Contactin 1 antibody is un-conjugated
Application:	Western Blotting (WB), ELISA

Product Details

Immunogen:	Synthesized peptide derived from the N-terminal region of Human Contactin 1.
Isotype:	IgG
Cross-Reactivity:	Human, Mouse, Rat
Purification:	The antibody was affinity-purified from rabbit antiserum by affinity-chromatography using epitope-specific immunogen.

Target Details

Target:	Contactin 1 (CNTN1)
Alternative Name:	CNTN1 (CNTN1 Products)
Background:	CNTN 1 antibody, CNTN antibody, Cntn1 antibody, CNTN1_HUMAN antibody, Contactin-1

Target Details

antibody, Contactin1 antibody, F3 antibody, F3cam antibody, Glycoprotein gp135 antibody, gp135 antibody, GP135 antibody, MYPCN antibody, Neural cell surface protein F3 antibody

UniProt: [Q12860](#)

Application Details

Application Notes: WB:1:500-1:2000, ELISA:1:20000,

Restrictions: For Research Use only

Handling

Format: Liquid

Buffer: Liquid in PBS containing 50 % glycerol, 0.5 % BSA and 0.02 % sodium azide.

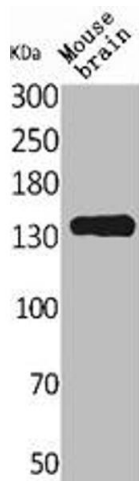
Preservative: Sodium azide

Precaution of Use: This product contains Sodium azide: a POISONOUS AND HAZARDOUS SUBSTANCE which should be handled by trained staff only.

Storage: -20 °C,-80 °C

Storage Comment: Upon receipt, store at -20°C or -80°C. Avoid repeated freeze.

Images



Western Blotting

Image 1. Western Blot analysis of mouse brain cells using Contactin 1 Polyclonal Antibody