

Datasheet for ABIN7188661  
**anti-PLA2G4A antibody (N-Term)**



[Go to Product page](#)

1 Image

### Overview

Quantity:	100 µg
Target:	PLA2G4A
Binding Specificity:	N-Term
Reactivity:	Human
Host:	Rabbit
Clonality:	Polyclonal
Conjugate:	This PLA2G4A antibody is un-conjugated
Application:	Western Blotting (WB), ELISA

### Product Details

Immunogen:	Synthesized peptide derived from the N-terminal region of Human cPLA2.
Isotype:	IgG
Cross-Reactivity:	Human, Mouse, Rat
Purification:	The antibody was affinity-purified from rabbit antiserum by affinity-chromatography using epitope-specific immunogen.

### Target Details

Target:	PLA2G4A
Alternative Name:	PLA2G4A ( <a href="#">PLA2G4A Products</a> )
Background:	Calcium dependent phospholipid binding protein antibody, CPLA 2 antibody, cPLA2 alpha

## Target Details

---

antibody, cPLA2 antibody, Cytosolic phospholipase A2 antibody, Cytosolic phospholipase A2 group IVA antibody, Lysophospholipase antibody, MGC126350 antibody, PA24A\_HUMAN antibody, Phosphatidylcholine 2 acylhydrolase antibody, Phosphatidylcholine 2-acylhydrolase antibody, Phospholipase A2 group 4 A antibody, Phospholipase A2 group IVA (cytosolic calcium dependent) antibody, Phospholipase A2 group IVA antibody, PhospholipaseA2 antibody, PLA2G4 antibody, pla2g4a antibody

UniProt: [P47712](#)

Pathways: [Inositol Metabolic Process](#), [G-protein mediated Events](#), [VEGF Signaling](#)

## Application Details

---

Application Notes: WB:1:500-1:2000, ELISA:1:20000,

Restrictions: For Research Use only

## Handling

---

Format: Liquid

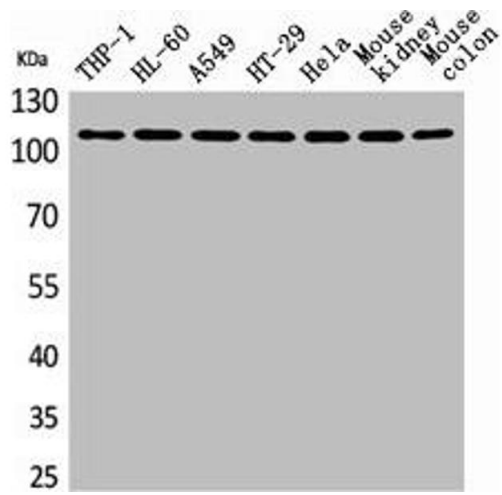
Buffer: Liquid in PBS containing 50 % glycerol, 0.5 % BSA and 0.02 % sodium azide.

Preservative: Sodium azide

Precaution of Use: This product contains Sodium azide: a POISONOUS AND HAZARDOUS SUBSTANCE which should be handled by trained staff only.

Storage: -20 °C,-80 °C

Storage Comment: Upon receipt, store at -20°C or -80°C. Avoid repeated freeze.



### Western Blotting

**Image 1.** Western Blot analysis of THP-1 H460 A549 HT29 HeLa mouse kidney mouse colon cells using cPLA2 Polyclonal Antibody