

Datasheet for ABIN7188722
anti-ELK1 antibody (N-Term)



[Go to Product page](#)

1 Image

Overview

Quantity:	100 µg
Target:	ELK1
Binding Specificity:	N-Term
Reactivity:	Human
Host:	Rabbit
Clonality:	Polyclonal
Conjugate:	This ELK1 antibody is un-conjugated
Application:	Western Blotting (WB), Immunohistochemistry (IHC), ELISA, Immunofluorescence (IF)

Product Details

Immunogen:	Synthesized peptide derived from the N-terminal region of Human Elk-1.
Isotype:	IgG
Cross-Reactivity:	Human, Mouse, Rat
Purification:	The antibody was affinity-purified from rabbit antiserum by affinity-chromatography using epitope-specific immunogen.

Target Details

Target:	ELK1
Alternative Name:	ELK1 (ELK1 Products)
Background:	ELK 1 antibody, Elk1 antibody, ELK1 member of ETS oncogene family antibody, ELK1 protein

Target Details

antibody, ELK1, ETS transcription factor antibody, ELK1_HUMAN antibody, ELK2 member of ETS oncogene family antibody, ETS domain containing protein Elk 1 antibody, ETS domain containing protein Elk1 antibody, ETS domain protein Elk1 antibody, ETS domain-containing protein Elk-1 antibody, ETS like gene 1 antibody, Member of ETS oncogene family antibody, Oncogene Elk1 antibody, Tyrosine kinase (ELK1) oncogene antibody

UniProt: [P19419](#)

Pathways: [MAPK Signaling](#), [Neurotrophin Signaling Pathway](#), [Activation of Innate immune Response](#), [Toll-Like Receptors Cascades](#), [Signaling of Hepatocyte Growth Factor Receptor](#), [BCR Signaling](#)

Application Details

Application Notes: WB:1:500-1:2000, IHC:1:100-1:300, IF:1:200-1:1000, ELISA:1:5000,

Restrictions: For Research Use only

Handling

Format: Liquid

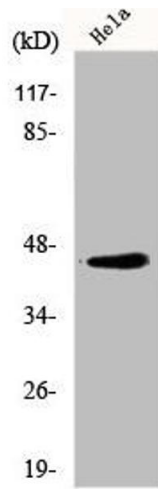
Buffer: Liquid in PBS containing 50 % glycerol, 0.5 % BSA and 0.02 % sodium azide.

Preservative: Sodium azide

Precaution of Use: This product contains Sodium azide: a POISONOUS AND HAZARDOUS SUBSTANCE which should be handled by trained staff only.

Storage: -20 °C,-80 °C

Storage Comment: Upon receipt, store at -20°C or -80°C. Avoid repeated freeze.



Western Blotting

Image 1. Western Blot analysis of HeLa cells using Elk-1 Polyclonal Antibody