

Datasheet for ABIN7188730
anti-EPH Receptor A2 antibody (N-Term)



[Go to Product page](#)

1 Image

Overview

Quantity:	100 µg
Target:	EPH Receptor A2 (EPHA2)
Binding Specificity:	N-Term
Reactivity:	Human
Host:	Rabbit
Clonality:	Polyclonal
Conjugate:	This EPH Receptor A2 antibody is un-conjugated
Application:	Western Blotting (WB), ELISA

Product Details

Immunogen:	Synthesized peptide derived from the N-terminal region of Human EphA2.
Isotype:	IgG
Cross-Reactivity:	Human, Mouse
Purification:	The antibody was affinity-purified from rabbit antiserum by affinity-chromatography using epitope-specific immunogen.

Target Details

Target:	EPH Receptor A2 (EPHA2)
Alternative Name:	EPHA2 (EPHA2 Products)
Background:	ARCC2 antibody, AW545284 antibody, CTPA antibody, CTPP1 antibody, CTRCT6 antibody, EC

Target Details

2.7.10.1 antibody, Eck antibody, Eph receptor A2 antibody, EPHA2 antibody, EPHA2_HUMAN antibody, Ephrin receptor antibody, Ephrin receptor EphA2 antibody, Ephrin type A receptor 2 antibody, Ephrin type-A receptor 2 antibody, Epithelial cell kinase antibody, Epithelial cell receptor protein tyrosine kinase antibody, Myk 2 antibody, Myk2 antibody, Sek 2 antibody, Sek2 antibody, Soluble EPHA2 variant 1 antibody, Tyrosine protein kinase receptor ECK antibody, Tyrosine-protein kinase receptor ECK antibody, Tyrosine-protein kinase receptor MPK-5 antibody, Tyrosine-protein kinase receptor SEK-2 antibody

UniProt: [P29317](#)

Pathways: [RTK Signaling](#)

Application Details

Application Notes: WB:1:500-1:2000, ELISA:1:40000,

Restrictions: For Research Use only

Handling

Format: Liquid

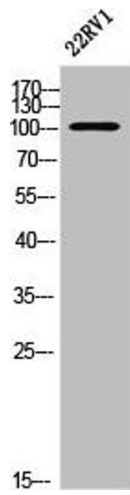
Buffer: Liquid in PBS containing 50 % glycerol, 0.5 % BSA and 0.02 % sodium azide.

Preservative: Sodium azide

Precaution of Use: This product contains Sodium azide: a POISONOUS AND HAZARDOUS SUBSTANCE which should be handled by trained staff only.

Storage: -20 °C,-80 °C

Storage Comment: Upon receipt, store at -20°C or -80°C. Avoid repeated freeze.



Western Blotting

Image 1. Western Blot analysis of 22RV1 cells using EphA2 Polyclonal Antibody