



[Go to Product page](#)

Datasheet for ABIN7188735

anti-Exonuclease 1 antibody (N-Term)

1 Image

Overview

Quantity:	100 µg
Target:	Exonuclease 1 (EX01)
Binding Specificity:	N-Term
Reactivity:	Human
Host:	Rabbit
Clonality:	Polyclonal
Conjugate:	This Exonuclease 1 antibody is un-conjugated
Application:	Western Blotting (WB), ELISA, Immunofluorescence (IF)

Product Details

Immunogen:	Synthesized peptide derived from the N-terminal region of Human Exo1.
Isotype:	IgG
Cross-Reactivity:	Human, Mouse
Purification:	The antibody was affinity-purified from rabbit antiserum by affinity-chromatography using epitope-specific immunogen.

Target Details

Target:	Exonuclease 1 (EX01)
Alternative Name:	EX01 (EX01 Products)
Background:	Exo1 antibody, EX01_HUMAN antibody, Exo1 antibody, Exonuclease 1 antibody, Exonuclease I

Target Details

antibody, Exonuclease1 antibody, HEX1 antibody, hExo I antibody, hExo1 antibody, hExoI antibody, Rad2 nuclease family member homolog of *S. cerevisiae* exonuclease 1 antibody

UniProt: [Q9UQ84](#)

Pathways: [DNA Damage Repair](#), [Production of Molecular Mediator of Immune Response](#)

Application Details

Application Notes: WB:1:500-1:2000, IF:1:200-1:1000, ELISA:1:10000,

Restrictions: For Research Use only

Handling

Format: Liquid

Buffer: Liquid in PBS containing 50 % glycerol, 0.5 % BSA and 0.02 % sodium azide.

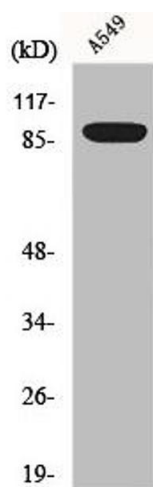
Preservative: Sodium azide

Precaution of Use: This product contains Sodium azide: a POISONOUS AND HAZARDOUS SUBSTANCE which should be handled by trained staff only.

Storage: -20 °C,-80 °C

Storage Comment: Upon receipt, store at -20°C or -80°C. Avoid repeated freeze.

Images



Western Blotting

Image 1. Western Blot analysis of A549 cells using Exo1 Polyclonal Antibody