

Datasheet for ABIN7188766  
**anti-GUCY1B3 antibody (N-Term)**



[Go to Product page](#)

1 Image

### Overview

Quantity:	100 µg
Target:	GUCY1B3
Binding Specificity:	N-Term
Reactivity:	Human
Host:	Rabbit
Clonality:	Polyclonal
Conjugate:	This GUCY1B3 antibody is un-conjugated
Application:	Western Blotting (WB), ELISA, Immunohistochemistry (IHC)

### Product Details

Immunogen:	Synthesized peptide derived from the N-terminal region of Human GCS-beta-1.
Isotype:	IgG
Cross-Reactivity:	Human, Mouse, Rat
Purification:	The antibody was affinity-purified from rabbit antiserum by affinity-chromatography using epitope-specific immunogen.

### Target Details

Target:	GUCY1B3
Alternative Name:	GUCY1B1 ( <a href="#">GUCY1B3 Products</a> )
Background:	GC-S-beta-1 antibody, GC-SB3 antibody, GCbeta1 antibody, GCS beta 1 antibody, GCS beta 3

## Target Details

antibody, GCS-beta-1 antibody, GCS-beta-3 antibody, GCYB1\_HUMAN antibody, guanylate cyclase 1, soluble, beta 3 antibody, Guanylate cyclase soluble beta 1 chain antibody, Guanylate cyclase soluble subunit beta-1 antibody, Guanylate cyclase soluble subunit beta-3 antibody, GUC1B3 antibody, GUCSB3 antibody, GUCY1B1 antibody, Gucy1b1, antibody, GUCY1B3 antibody, SGC antibody, Soluble guanylate cyclase small subunit antibody

UniProt: [Q02153](#)

Pathways: [Transition Metal Ion Homeostasis](#)

## Application Details

Application Notes: WB:1:500-1:2000, IHC:1:100-1:300, ELISA:1:5000,

Restrictions: For Research Use only

## Handling

Format: Liquid

Buffer: Liquid in PBS containing 50 % glycerol, 0.5 % BSA and 0.02 % sodium azide.

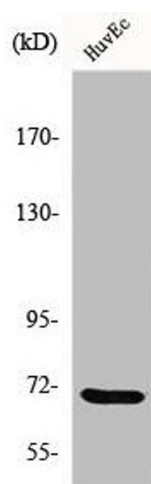
Preservative: Sodium azide

Precaution of Use: This product contains Sodium azide: a POISONOUS AND HAZARDOUS SUBSTANCE which should be handled by trained staff only.

Storage: -20 °C,-80 °C

Storage Comment: Upon receipt, store at -20°C or -80°C. Avoid repeated freeze.

## Images



### Western Blotting

**Image 1.** Western Blot analysis of HuvEc cells using GCS- $\beta$ -1 Polyclonal Antibody