

Datasheet for ABIN7188776

**anti-GLUT4 antibody (N-Term)**[Go to Product page](#)

## 1 Image

## Overview

Quantity:	100 µg
Target:	GLUT4 (SLC2A4)
Binding Specificity:	N-Term
Reactivity:	Human
Host:	Rabbit
Clonality:	Polyclonal
Conjugate:	This GLUT4 antibody is un-conjugated
Application:	Western Blotting (WB), ELISA

## Product Details

Immunogen:	Synthesized peptide derived from the N-terminal region of Human Glut4.
Isotype:	IgG
Cross-Reactivity:	Human, Mouse, Rat
Purification:	The antibody was affinity-purified from rabbit antiserum by affinity-chromatography using epitope-specific immunogen.

## Target Details

Target:	GLUT4 (SLC2A4)
Alternative Name:	SLC2A4 ( <a href="#">SLC2A4 Products</a> )
Background:	Insulin-responsive antibody, Glucose transporter GLUT 4 antibody, Glucose transporter type 4

## Target Details

antibody, Glucose transporter type 4 insulin responsive antibody, GLUT 4 antibody, GLUT-4 antibody, GLUT4 antibody, GTR4\_HUMAN antibody, Insulin responsive glucose transporter type 4 antibody, kug antibody, SLC 2A4 antibody, SLC2A4 antibody, solute carrier family 2 (facilitated glucose transporter) member 4 antibody, Solute carrier family 2 member 4 antibody, Solute carrier family 2, facilitated glucose transporter member 4 antibody

UniProt: [P14672](#)

Pathways: [AMPK Signaling](#), [Carbohydrate Homeostasis](#), [Proton Transport](#), [Brown Fat Cell Differentiation](#), [Warburg Effect](#)

## Application Details

Application Notes: WB:1:500-1:2000, ELISA:1:20000,

Restrictions: For Research Use only

## Handling

Format: Liquid

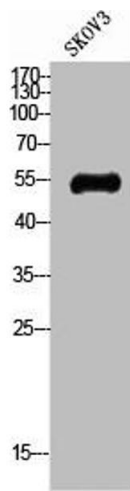
Buffer: Liquid in PBS containing 50 % glycerol, 0.5 % BSA and 0.02 % sodium azide.

Preservative: Sodium azide

Precaution of Use: This product contains Sodium azide: a POISONOUS AND HAZARDOUS SUBSTANCE which should be handled by trained staff only.

Storage: -20 °C,-80 °C

Storage Comment: Upon receipt, store at -20°C or -80°C. Avoid repeated freeze.



Western Blotting

**Image 1.** Western Blot analysis of SKOV3 cells using Glut4 Polyclonal Antibody