

Datasheet for ABIN7188777  
**anti-SLC2A5 antibody (N-Term)**[Go to Product page](#)

## 1 Image

## Overview

Quantity:	100 µg
Target:	SLC2A5
Binding Specificity:	N-Term
Reactivity:	Human
Host:	Rabbit
Clonality:	Polyclonal
Conjugate:	This SLC2A5 antibody is un-conjugated
Application:	Western Blotting (WB), ELISA

## Product Details

Immunogen:	Synthesized peptide derived from the N-terminal region of Human Glut5.
Isotype:	IgG
Cross-Reactivity:	Human
Purification:	The antibody was affinity-purified from rabbit antiserum by affinity-chromatography using epitope-specific immunogen.

## Target Details

Target:	SLC2A5
Alternative Name:	SLC2A5 ( <a href="#">SLC2A5 Products</a> )
Background:	Facilitated glucose transporter member 5 antibody, Fructose transporter antibody, Glucose

## Target Details

transporte, kidney antibody, Glucose Transporter 5 GLUT5 antibody, glucose transporter like protein 5 antibody, Glucose transporter type 5 antibody, Glucose transporter type 5 small intestine antibody, GLUT 5 antibody, GLUT-5 antibody, GLUT5 antibody, GTR5\_HUMAN antibody, SLC 2A5 antibody, SLC2A5 antibody, small intestine antibody, solute carrier family 2 (facilitated glucose/fructose transporter), member 5 antibody, Solute carrier family 2 antibody

UniProt: [P22732](#)

## Application Details

Application Notes: WB:1:500-1:2000, ELISA:1:20000,

Restrictions: For Research Use only

## Handling

Format: Liquid

Buffer: Liquid in PBS containing 50 % glycerol, 0.5 % BSA and 0.02 % sodium azide.

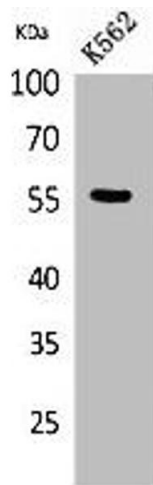
Preservative: Sodium azide

Precaution of Use: This product contains Sodium azide: a POISONOUS AND HAZARDOUS SUBSTANCE which should be handled by trained staff only.

Storage: -20 °C,-80 °C

Storage Comment: Upon receipt, store at -20°C or -80°C. Avoid repeated freeze.

## Images



### Western Blotting

**Image 1.** Western Blot analysis of K562 cells using Glut5 Polyclonal Antibody.