



[Go to Product page](#)

Datasheet for ABIN7188786  
**anti-GPR158 antibody (N-Term)**

1 Image

### Overview

Quantity:	100 µg
Target:	GPR158
Binding Specificity:	N-Term
Reactivity:	Human
Host:	Rabbit
Clonality:	Polyclonal
Conjugate:	This GPR158 antibody is un-conjugated
Application:	ELISA, Western Blotting (WB), Immunohistochemistry (IHC), Immunofluorescence (IF)

### Product Details

Immunogen:	Synthesized peptide derived from the N-terminal region of Human GPR158.
Isotype:	IgG
Cross-Reactivity:	Human, Mouse
Purification:	The antibody was affinity-purified from rabbit antiserum by affinity-chromatography using epitope-specific immunogen.

### Target Details

Target:	GPR158
Alternative Name:	GPR158 ( <a href="#">GPR158 Products</a> )
Background:	5330427M13Rik antibody, GP158_HUMAN antibody, GPR158 antibody, mKIAA1136 antibody,

## Target Details

Probable G-protein coupled receptor 158 antibody, RP11-59G22.1 antibody, RP23-133B16.1 antibody

UniProt: [Q5T848](#)

Pathways: [Regulation of G-Protein Coupled Receptor Protein Signaling](#)

## Application Details

Application Notes: WB:1:500-1:2000, IHC:1:100-1:300, IF:1:200-1:1000, ELISA:1:5000,

Restrictions: For Research Use only

## Handling

Format: Liquid

Buffer: Liquid in PBS containing 50 % glycerol, 0.5 % BSA and 0.02 % sodium azide.

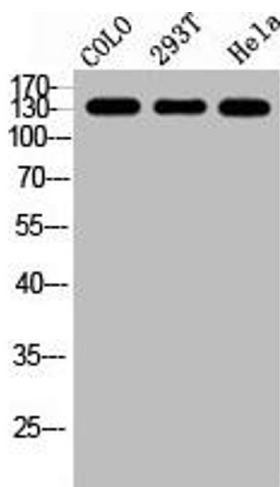
Preservative: Sodium azide

Precaution of Use: This product contains Sodium azide: a POISONOUS AND HAZARDOUS SUBSTANCE which should be handled by trained staff only.

Storage: -20 °C,-80 °C

Storage Comment: Upon receipt, store at -20°C or -80°C. Avoid repeated freeze.

## Images



### Western Blotting

**Image 1.** Western Blot analysis of COLO 293T HELA cells using GPR158 Polyclonal Antibody