



[Go to Product page](#)

Datasheet for ABIN7188806  
**anti-HIST1H2BH antibody (N-Term)**

1 Image

Overview

Quantity:	100 µg
Target:	HIST1H2BH
Binding Specificity:	N-Term
Reactivity:	Human
Host:	Rabbit
Clonality:	Polyclonal
Conjugate:	This HIST1H2BH antibody is un-conjugated
Application:	Western Blotting (WB), Immunofluorescence (IF), ELISA, Immunohistochemistry (IHC)

Product Details

Immunogen:	Synthesized peptide derived from the N-terminal region of Human Histone H2B.
Isotype:	IgG
Cross-Reactivity:	Human, Mouse
Purification:	The antibody was affinity-purified from rabbit antiserum by affinity-chromatography using epitope-specific immunogen.

Target Details

Target:	HIST1H2BH
Alternative Name:	HIST1H2BH ( <a href="#">HIST1H2BH Products</a> )
Background:	HIST1H2BH antibody, H2BFJHistone H2B type 1-H antibody, Histone H2B.j antibody, H2B/j

## Target Details

antibody

UniProt: [Q93079](#)

Pathways: [Telomere Maintenance](#)

## Application Details

Application Notes: WB:1:500-1:2000, IHC:1:100-1:300, IF:1:200-1:1000, ELISA:1:5000,

Restrictions: For Research Use only

## Handling

Format: Liquid

Buffer: Liquid in PBS containing 50 % glycerol, 0.5 % BSA and 0.02 % sodium azide.

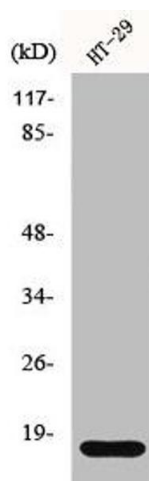
Preservative: Sodium azide

Precaution of Use: This product contains Sodium azide: a POISONOUS AND HAZARDOUS SUBSTANCE which should be handled by trained staff only.

Storage: -20 °C,-80 °C

Storage Comment: Upon receipt, store at -20°C or -80°C. Avoid repeated freeze.

## Images



### Western Blotting

**Image 1.** Western Blot analysis of HT29 cells using Histone H2B Polyclonal Antibody