

Datasheet for ABIN7188852
anti-LILRB1 antibody (N-Term)[Go to Product page](#)

1 Image

Overview

Quantity:	100 µg
Target:	LILRB1
Binding Specificity:	N-Term
Reactivity:	Human
Host:	Rabbit
Clonality:	Polyclonal
Conjugate:	This LILRB1 antibody is un-conjugated
Application:	Western Blotting (WB), ELISA

Product Details

Immunogen:	Synthesized peptide derived from the N-terminal region of Human LIR-1.
Isotype:	IgG
Cross-Reactivity:	Human
Purification:	The antibody was affinity-purified from rabbit antiserum by affinity-chromatography using epitope-specific immunogen.

Target Details

Target:	LILRB1
Alternative Name:	LILRB1 (LILRB1 Products)
Background:	CD85 antibody, CD85 antigen antibody, CD85 antigen like family member J antibody, CD85

Target Details

antigen-like family member J antibody, CD85j antibody, CD85j antigen antibody, Ig like transcript 2 antibody, ILT 2 antibody, ILT-2 antibody, ILT2 antibody, immunoglobulin like transcript 2 antibody, Immunoglobulin-like transcript 2 antibody, leukocyte Ig like receptor 1 antibody, Leukocyte immunoglobulin like receptor 1 antibody, leukocyte immunoglobulin like receptor subfamily B member 1 antibody, Leukocyte immunoglobulin like receptor subfamily B member 1 precursor antibody, leukocyte immunoglobulin like receptor subfamily B member 1 soluble isoform antibody, leukocyte immunoglobulin like receptor, subfamily B, member 1 antibody, Leukocyte immunoglobulin-like receptor 1 antibody, Leukocyte immunoglobulin-like receptor subfamily B member 1 antibody, leukocyte immunoglobulin-like receptor subfamily B member 1 soluble isoform antibody, leukocyte immunoglobulin-like receptor, subfamily B (with TM and ITIM domains), member 1 antibody, LILRB1 antibody, LIR 1 antibody, LIR-1 antibody, LIR1 antibody, LIRB1_HUMAN antibody, MIR 7 antibody, MIR-7 antibody, MIR7 antibody, Monocyte/macrophage immunoglobulin like receptor 7 antibody, Monocyte/macrophage immunoglobulin-like receptor 7 antibody, PIR B antibody, PIRB antibody

UniProt: [Q8NHL6](#)

Pathways: [Cellular Response to Molecule of Bacterial Origin](#), [Regulation of Leukocyte Mediated Immunity](#), [Positive Regulation of Immune Effector Process](#), [Production of Molecular Mediator of Immune Response](#)

Application Details

Application Notes: WB:1:500-1:2000, ELISA:1:10000,

Restrictions: For Research Use only

Handling

Format: Liquid

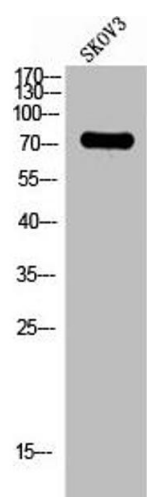
Buffer: Liquid in PBS containing 50 % glycerol, 0.5 % BSA and 0.02 % sodium azide.

Preservative: Sodium azide

Precaution of Use: This product contains Sodium azide: a POISONOUS AND HAZARDOUS SUBSTANCE which should be handled by trained staff only.

Storage: -20 °C, -80 °C

Storage Comment: Upon receipt, store at -20°C or -80°C. Avoid repeated freeze.



Western Blotting

Image 1. Western Blot analysis of SKOV3 cells using LIR-1 Polyclonal Antibody