



[Go to Product page](#)

Datasheet for ABIN7188867

anti-MAP2K6 antibody (N-Term)

1 Image

Overview

Quantity:	100 µg
Target:	MAP2K6
Binding Specificity:	N-Term
Reactivity:	Human
Host:	Rabbit
Clonality:	Polyclonal
Conjugate:	This MAP2K6 antibody is un-conjugated
Application:	Western Blotting (WB), ELISA, Immunohistochemistry (IHC), Immunofluorescence (IF)

Product Details

Immunogen:	Synthesized peptide derived from the N-terminal region of Human MEK-6.
Isotype:	IgG
Cross-Reactivity:	Human, Mouse, Rat
Purification:	The antibody was affinity-purified from rabbit antiserum by affinity-chromatography using epitope-specific immunogen.

Target Details

Target:	MAP2K6
Alternative Name:	MAP2K6 (MAP2K6 Products)
Background:	Dual specificity mitogen activated protein kinase kinase 6 antibody, Dual specificity mitogen-

Target Details

activated protein kinase kinase 6 antibody, MAP kinase kinase 6 antibody, MAP2K6 antibody, MAPK/ERK kinase 6 antibody, MAPKK 6 antibody, MAPKK6 antibody, MEK 6 antibody, MEK6 antibody, Mitogen Activated Protein Kinase Kinase 6 antibody, MKK 6 antibody, MKK6 antibody, MP2K6_HUMAN antibody, PRKMK6 antibody, protein kinase antibody, Protein kinase mitogen activated kinase 6 antibody, protein kinase, mitogen-activated, kinase 6 (MAP kinase kinase 6) antibody, SAPK kinase 3 antibody, SAPKK-3 antibody, SAPKK3 antibody, SKK3 antibody, Stress-activated protein kinase kinase 3 antibody

UniProt: [P52564](#)

Pathways: [MAPK Signaling](#), [TLR Signaling](#), [Activation of Innate immune Response](#), [Regulation of Muscle Cell Differentiation](#), [Toll-Like Receptors Cascades](#)

Application Details

Application Notes: WB:1:500-1:2000, IHC:1:100-1:300, IF:1:200-1:1000, ELISA:1:10000,

Restrictions: For Research Use only

Handling

Format: Liquid

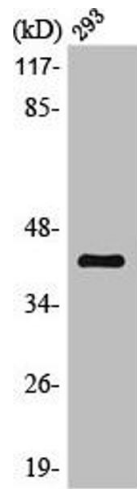
Buffer: Liquid in PBS containing 50 % glycerol, 0.5 % BSA and 0.02 % sodium azide.

Preservative: Sodium azide

Precaution of Use: This product contains Sodium azide: a POISONOUS AND HAZARDOUS SUBSTANCE which should be handled by trained staff only.

Storage: -20 °C,-80 °C

Storage Comment: Upon receipt, store at -20°C or -80°C. Avoid repeated freeze.



Western Blotting

Image 1. Western Blot analysis of 293 cells using MEK-6 Polyclonal Antibody