



[Go to Product page](#)

Datasheet for ABIN7188875
anti-MLKL antibody (N-Term)

1 Image

Overview

Quantity:	100 µg
Target:	MLKL
Binding Specificity:	N-Term
Reactivity:	Human
Host:	Rabbit
Clonality:	Polyclonal
Conjugate:	This MLKL antibody is un-conjugated
Application:	Western Blotting (WB), ELISA

Product Details

Immunogen:	Synthesized peptide derived from the N-terminal region of Human MLKL.
Isotype:	IgG
Cross-Reactivity:	Human
Purification:	The antibody was affinity-purified from rabbit antiserum by affinity-chromatography using epitope-specific immunogen.

Target Details

Target:	MLKL
Alternative Name:	MLKL (MLKL Products)
Background:	9130019I15Rik antibody, FLJ34389 antibody, hMLKL antibody, Mixed lineage kinase domain

Target Details

like antibody, Mixed lineage kinase domain like protein antibody, Mixed lineage kinase domain like pseudokinase antibody, Mixed lineage kinase domain-like protein antibody, MLKL antibody, MLKL_HUMAN antibody

UniProt: [Q8NB16](#)

Application Details

Application Notes: WB:1:500-1:2000, ELISA:1:20000,

Restrictions: For Research Use only

Handling

Format: Liquid

Buffer: Liquid in PBS containing 50 % glycerol, 0.5 % BSA and 0.02 % sodium azide.

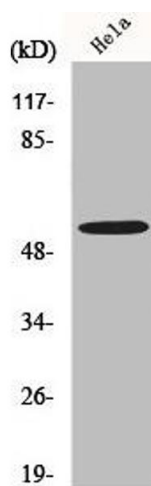
Preservative: Sodium azide

Precaution of Use: This product contains Sodium azide: a POISONOUS AND HAZARDOUS SUBSTANCE which should be handled by trained staff only.

Storage: -20 °C,-80 °C

Storage Comment: Upon receipt, store at -20°C or -80°C. Avoid repeated freeze.

Images



Western Blotting

Image 1. Western Blot analysis of K562 cells using MLKL Polyclonal Antibody