



[Go to Product page](#)

Datasheet for ABIN7188887

anti-MRPS36 antibody (N-Term)

1 Image

Overview

Quantity:	100 µg
Target:	MRPS36
Binding Specificity:	N-Term
Reactivity:	Human
Host:	Rabbit
Clonality:	Polyclonal
Conjugate:	This MRPS36 antibody is un-conjugated
Application:	ELISA, Western Blotting (WB), Immunohistochemistry (IHC)

Product Details

Immunogen:	Synthesized peptide derived from the N-terminal region of Human MRP-S36.
Isotype:	IgG
Cross-Reactivity:	Human
Purification:	The antibody was affinity-purified from rabbit antiserum by affinity-chromatography using epitope-specific immunogen.

Target Details

Target:	MRPS36
Alternative Name:	MRPS36 (MRPS36 Products)
Background:	1110018B13Rik antibody, 28S ribosomal protein S36 antibody, DC47 antibody, MGC22896

Target Details

antibody, mitochondrial antibody, MRP-S36 antibody, MRPS36 antibody,
OTTHUMP00000222036 antibody, RT36_HUMAN antibody, S36mt antibody

UniProt: [P82909](#)

Application Details

Application Notes: WB:1:500-1:2000, IHC:1:100-1:300, ELISA:1:10000,

Restrictions: For Research Use only

Handling

Format: Liquid

Buffer: Liquid in PBS containing 50 % glycerol, 0.5 % BSA and 0.02 % sodium azide.

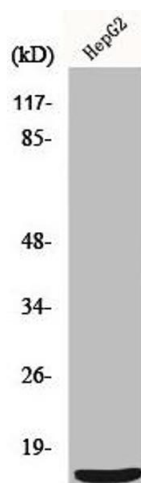
Preservative: Sodium azide

Precaution of Use: This product contains Sodium azide: a POISONOUS AND HAZARDOUS SUBSTANCE which should be handled by trained staff only.

Storage: -20 °C,-80 °C

Storage Comment: Upon receipt, store at -20°C or -80°C. Avoid repeated freeze.

Images



Western Blotting

Image 1. Western Blot analysis of HepG2 cells using MRP-S36 Polyclonal Antibody