



Datasheet for ABIN7188894
anti-NRAS/HRAS/KRAS antibody (N-Term)



[Go to Product page](#)

2 Images

Overview

Quantity:	100 µg
Target:	NRAS/HRAS/KRAS
Binding Specificity:	N-Term
Reactivity:	Human
Host:	Rabbit
Clonality:	Polyclonal
Conjugate:	This NRAS/HRAS/KRAS antibody is un-conjugated
Application:	Western Blotting (WB), ELISA, Immunohistochemistry (IHC)

Product Details

Immunogen:	Synthesized peptide derived from the N-terminal region of Human N/H/K-Ras.
Isotype:	IgG
Cross-Reactivity:	Human, Mouse, Rat
Purification:	The antibody was affinity-purified from rabbit antiserum by affinity-chromatography using epitope-specific immunogen.

Target Details

Target:	NRAS/HRAS/KRAS
Abstract:	NRAS/HRAS/KRAS Products
Background:	NRAS, HRAS1, GTPase NRas, Transforming protein N-Ras, HRAS, HRAS1, GTPase HRas, H-

Target Details

Ras-1, Ha-Ras, Transforming protein p21, c-H-ras, p21ras, KRAS, KRAS2, RASK2, GTPase KRas, K-Ras 2, Ki-Ras, c-K-ras, c-Ki-ras

UniProt: [P01111](#), [P01112](#), [P01116](#)

Application Details

Application Notes: WB:1:500-1:2000, IHC:1:100-1:300, ELISA:1:20000,

Restrictions: For Research Use only

Handling

Format: Liquid

Buffer: Liquid in PBS containing 50 % glycerol, 0.5 % BSA and 0.02 % sodium azide.

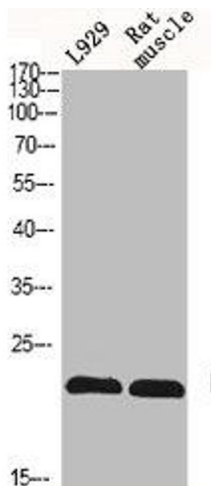
Preservative: Sodium azide

Precaution of Use: This product contains Sodium azide: a POISONOUS AND HAZARDOUS SUBSTANCE which should be handled by trained staff only.

Storage: -20 °C,-80 °C

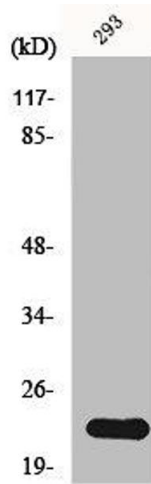
Storage Comment: Upon receipt, store at -20°C or -80°C. Avoid repeated freeze.

Images



Western Blotting

Image 1. Western Blot analysis of L929 RAT-MUSLCE cells using N/H/K-Ras Polyclonal Antibody



Western Blotting

Image 2. Western Blot analysis of 293 cells using N/H/K-Ras Polyclonal Antibody