

Datasheet for ABIN7188930

anti-F2RL3 antibody (Cleaved-Gly48)[Go to Product page](#)**1** Image

Overview

Quantity:	100 µg
Target:	F2RL3
Binding Specificity:	Cleaved-Gly48
Reactivity:	Human
Host:	Rabbit
Clonality:	Polyclonal
Conjugate:	This F2RL3 antibody is un-conjugated
Application:	Western Blotting (WB), ELISA

Product Details

Immunogen:	Synthesized peptide derived from the N-terminal region of Human PAR-4.
Isotype:	IgG
Cross-Reactivity:	Human
Purification:	The antibody was affinity-purified from rabbit antiserum by affinity-chromatography using epitope-specific immunogen.

Target Details

Target:	F2RL3
Alternative Name:	F2RL3 (F2RL3 Products)
Background:	Coagulation factor II (thrombin) receptor like 3 antibody, Coagulation factor II receptor like 3

Target Details

antibody, Coagulation factor II receptor-like 3 antibody, F2RL3 antibody, PAR 4 antibody, PAR-4 antibody, PAR4 antibody, PAR4_HUMAN antibody, protease activated receptor 4 antibody, protease activated receptor4 antibody, Proteinase activated receptor 4 antibody, Proteinase-activated receptor 4 antibody, Thrombin receptor like 3 antibody, Thrombin receptor-like 3 antibody

UniProt: [Q96RI0](#)

Pathways: [Carbohydrate Homeostasis](#), [Regulation of Carbohydrate Metabolic Process](#)

Application Details

Application Notes: WB:1:500-1:2000, ELISA:1:5000,

Restrictions: For Research Use only

Handling

Format: Liquid

Buffer: Liquid in PBS containing 50 % glycerol, 0.5 % BSA and 0.02 % sodium azide.

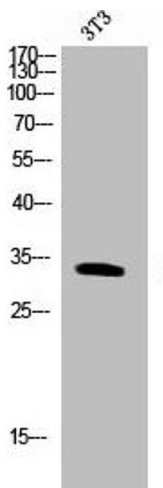
Preservative: Sodium azide

Precaution of Use: This product contains Sodium azide: a POISONOUS AND HAZARDOUS SUBSTANCE which should be handled by trained staff only.

Storage: -20 °C,-80 °C

Storage Comment: Upon receipt, store at -20°C or -80°C. Avoid repeated freeze.

Images



Western Blotting

Image 1. Western Blot analysis of NIH-3T3 cells using Cleaved-PAR-4 (G48) Polyclonal Antibody