

Datasheet for ABIN7188947  
**anti-ANP32B antibody (N-Term)**[Go to Product page](#)

## 1 Image

## Overview

Quantity:	100 µg
Target:	ANP32B
Binding Specificity:	N-Term
Reactivity:	Human
Host:	Rabbit
Clonality:	Polyclonal
Conjugate:	This ANP32B antibody is un-conjugated
Application:	Western Blotting (WB), ELISA

## Product Details

Immunogen:	Synthesized peptide derived from the N-terminal region of Human PHAPI2.
Isotype:	IgG
Cross-Reactivity:	Human, Mouse, Rat
Purification:	The antibody was affinity-purified from rabbit antiserum by affinity-chromatography using epitope-specific immunogen.

## Target Details

Target:	ANP32B
Alternative Name:	ANP32B ( <a href="#">ANP32B Products</a> )
Background:	Acidic (leucine rich) nuclear phosphoprotein 32 family member B antibody, Acidic leucine rich

## Target Details

nuclear phosphoprotein 32 family member B antibody, Acidic leucine-rich nuclear phosphoprotein 32 family member B antibody, Acidic nuclear phosphoprotein 32 family member B antibody, Acidic protein rich in leucines antibody, AN32B\_HUMAN antibody, ANP 32B antibody, ANP32B antibody, APRIL antibody, OTTHUMP0000006377 antibody, PAL 31 antibody, PAL31 antibody, PHAPI 2 antibody, PHAPI2 antibody, PHAPI2 protein antibody, PHAPI2a antibody, Proliferation related acidic leucine rich protein antibody, Putative HLA-DR-associated protein I-2 antibody, Silver stainable protein SSP 29 antibody, Silver stainable protein SSP29 antibody, Silver-stainable protein SSP29 antibody, Ssp 29 antibody, Ssp29 antibody

UniProt: [Q92688](#)

## Application Details

Application Notes: WB:1:500-1:2000, ELISA:1:40000,

Restrictions: For Research Use only

## Handling

Format: Liquid

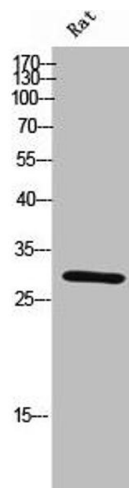
Buffer: Liquid in PBS containing 50 % glycerol, 0.5 % BSA and 0.02 % sodium azide.

Preservative: Sodium azide

Precaution of Use: This product contains Sodium azide: a POISONOUS AND HAZARDOUS SUBSTANCE which should be handled by trained staff only.

Storage: -20 °C, -80 °C

Storage Comment: Upon receipt, store at -20°C or -80°C. Avoid repeated freeze.



#### Western Blotting

**Image 1.** Western Blot analysis of rat cells using PHAPI2 Polyclonal Antibody