



[Go to Product page](#)

Datasheet for ABIN7188961

anti-Prokineticin Receptor 1 antibody (N-Term)

2 Images

Overview

Quantity:	100 µg
Target:	Prokineticin Receptor 1 (PROKR1)
Binding Specificity:	N-Term
Reactivity:	Human
Host:	Rabbit
Clonality:	Polyclonal
Conjugate:	This Prokineticin Receptor 1 antibody is un-conjugated
Application:	ELISA, Western Blotting (WB), Immunofluorescence (IF)

Product Details

Immunogen:	Synthesized peptide derived from the N-terminal region of Human PKR1.
Isotype:	IgG
Cross-Reactivity:	Human, Mouse, Rat
Purification:	The antibody was affinity-purified from rabbit antiserum by affinity-chromatography using epitope-specific immunogen.

Target Details

Target:	Prokineticin Receptor 1 (PROKR1)
Alternative Name:	PROKR1 (PROKR1 Products)
Background:	EG-VEGF receptor antibody, G protein coupled receptor 73 antibody, G protein coupled receptor

Target Details

ZAQ antibody, G-protein coupled receptor 73 antibody, G-protein coupled receptor ZAQ antibody, GPR73 antibody, GPR73a antibody, PK R1 antibody, PK-R1 antibody, PKR1 antibody, PKR1_HUMAN antibody, Prokineticin receptor 1 antibody, PROKR1 antibody, zaq antibody

UniProt: [Q8TCW9](#)

Pathways: [Hedgehog Signaling](#), [EGFR Signaling Pathway](#), [Neurotrophin Signaling Pathway](#), [Myometrial Relaxation and Contraction](#), [G-protein mediated Events](#), [Interaction of EGFR with phospholipase C-gamma](#)

Application Details

Application Notes: WB:1:500-1:2000, IF:1:200-1:1000, ELISA:1:20000,

Restrictions: For Research Use only

Handling

Format: Liquid

Buffer: Liquid in PBS containing 50 % glycerol, 0.5 % BSA and 0.02 % sodium azide.

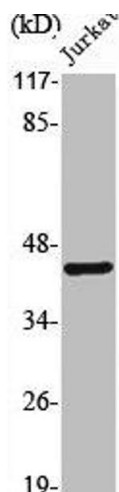
Preservative: Sodium azide

Precaution of Use: This product contains Sodium azide: a POISONOUS AND HAZARDOUS SUBSTANCE which should be handled by trained staff only.

Storage: -20 °C,-80 °C

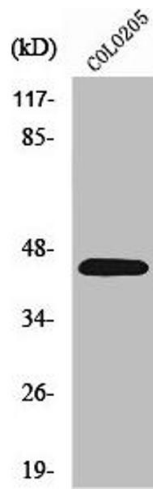
Storage Comment: Upon receipt, store at -20°C or -80°C. Avoid repeated freeze.

Images



Western Blotting

Image 1. Western Blot analysis of Jurkat cells using PKR1 Polyclonal Antibody



Western Blotting

Image 2. Western Blot analysis of COLO205 cells using PKR1 Polyclonal Antibody