



[Go to Product page](#)

Datasheet for ABIN7188977

anti-PRL3D1 antibody (N-Term)

1 Image

Overview

Quantity:	100 µg
Target:	PRL3D1
Binding Specificity:	N-Term
Reactivity:	Human
Host:	Rabbit
Clonality:	Polyclonal
Conjugate:	This PRL3D1 antibody is un-conjugated
Application:	Western Blotting (WB), ELISA

Product Details

Immunogen:	Synthesized peptide derived from the N-terminal region of Human QM.
Isotype:	IgG
Cross-Reactivity:	Human, Mouse, Rat
Purification:	The antibody was affinity-purified from rabbit antiserum by affinity-chromatography using epitope-specific immunogen.

Target Details

Target:	PRL3D1
Alternative Name:	RPL1 (PRL3D1 Products)
Background:	RPL10 antibody, DXS648E antibody, QM antibody, 60S ribosomal protein L10 antibody, Laminin

Target Details

receptor homolog antibody, Large ribosomal subunit protein uL16 antibody, Protein QM antibody, Ribosomal protein L10 antibody, Tumor suppressor QM antibody

UniProt: [P27635](#)

Application Details

Application Notes: WB:1:500-1:2000, ELISA:1:20000,

Restrictions: For Research Use only

Handling

Format: Liquid

Buffer: Liquid in PBS containing 50 % glycerol, 0.5 % BSA and 0.02 % sodium azide.

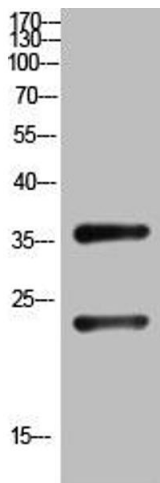
Preservative: Sodium azide

Precaution of Use: This product contains Sodium azide: a POISONOUS AND HAZARDOUS SUBSTANCE which should be handled by trained staff only.

Storage: -20 °C,-80 °C

Storage Comment: Upon receipt, store at -20°C or -80°C. Avoid repeated freeze.

Images



Western Blotting

Image 1. Western Blot analysis of customer's (cat sample) using QM Polyclonal Antibody.