



[Go to Product page](#)

Datasheet for ABIN7189015

## anti-Serotonin Receptor 2B antibody (N-Term)

### 1 Image

#### Overview

Quantity:	100 µg
Target:	Serotonin Receptor 2B (HTR2B)
Binding Specificity:	N-Term
Reactivity:	Human
Host:	Rabbit
Clonality:	Polyclonal
Conjugate:	This Serotonin Receptor 2B antibody is un-conjugated
Application:	Western Blotting (WB), ELISA, Immunofluorescence (IF)

#### Product Details

Immunogen:	Synthesized peptide derived from the N-terminal region of Human SR-2B.
Isotype:	IgG
Cross-Reactivity:	Human
Purification:	The antibody was affinity-purified from rabbit antiserum by affinity-chromatography using epitope-specific immunogen.

#### Target Details

Target:	Serotonin Receptor 2B (HTR2B)
Alternative Name:	HTR2B ( <a href="#">HTR2B Products</a> )
Background:	5 HT 2B antibody, 5 HT 2B receptor antibody, 5 HT(2B) antibody, 5 HT2B antibody, 5

## Target Details

---

hydroxytryptamine (serotonin) receptor 2B antibody, 5 hydroxytryptamine (serotonin) receptor 2B G protein coupled antibody, 5 hydroxytryptamine 2B receptor antibody, 5 hydroxytryptamine receptor 2B antibody, 5-HT-2B antibody, 5-HT2B antibody, 5-hydroxytryptamine receptor 2B antibody, 5HT(2B) antibody, 5HT2B Receptor antibody, 5HT2B\_HUMAN antibody, 5HT2F antibody, Htr 2b antibody, Htr2b antibody, NP75 protein antibody, SEROTONIN 5HT2B RECEPTOR antibody, Serotonin receptor 2B antibody, Stomach fundus serotonin receptor antibody

UniProt: [P41595](#)

Pathways: [JAK-STAT Signaling](#), [Inositol Metabolic Process](#), [Regulation of G-Protein Coupled Receptor Protein Signaling](#), [Regulation of Carbohydrate Metabolic Process](#)

## Application Details

---

Application Notes: WB:1:500-1:2000, IF:1:200-1:1000, ELISA:1:10000,

Restrictions: For Research Use only

## Handling

---

Format: Liquid

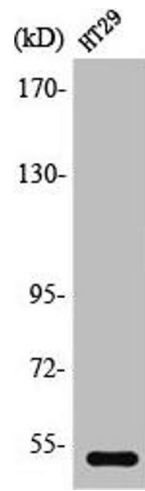
Buffer: Liquid in PBS containing 50 % glycerol, 0.5 % BSA and 0.02 % sodium azide.

Preservative: Sodium azide

Precaution of Use: This product contains Sodium azide: a POISONOUS AND HAZARDOUS SUBSTANCE which should be handled by trained staff only.

Storage: -20 °C,-80 °C

Storage Comment: Upon receipt, store at -20°C or -80°C. Avoid repeated freeze.



### Western Blotting

**Image 1.** Western Blot analysis of HeLa cells using SR-2B Polyclonal Antibody