



[Go to Product page](#)

Datasheet for ABIN7189141
anti-Bestrophin 2 antibody

2 Images

Overview

Quantity:	100 µg
Target:	Bestrophin 2 (BEST2)
Reactivity:	Human
Host:	Rabbit
Clonality:	Polyclonal
Conjugate:	This Bestrophin 2 antibody is un-conjugated
Application:	Western Blotting (WB), Immunohistochemistry (IHC)

Product Details

Immunogen:	Synthetic Peptide
Isotype:	IgG
Cross-Reactivity:	Mouse, Rat
Purification:	Affinity purification

Target Details

Target:	Bestrophin 2 (BEST2)
Alternative Name:	BEST2 (BEST2 Products)
Background:	BEST2 antibody, VMD2L1Bestrophin-2 antibody, Vitelliform macular dystrophy 2-like protein 1 antibody
UniProt:	Q8NFU1

Application Details

Application Notes: WB:1:500-1000, IHC:1:200-500,

Restrictions: For Research Use only

Handling

Format: Liquid

Buffer: PBS, pH 7.4, containing 0.02 % sodium azide as Preservative and 50 % Glycerol.

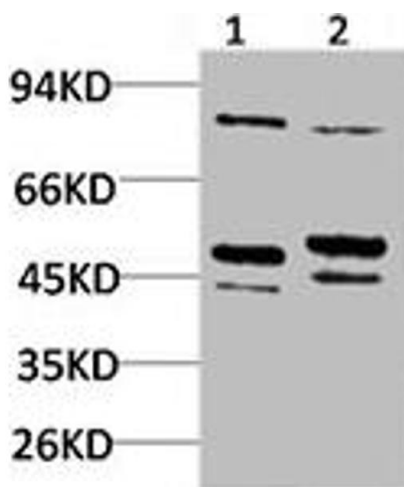
Preservative: Sodium azide

Precaution of Use: This product contains Sodium azide: a POISONOUS AND HAZARDOUS SUBSTANCE which should be handled by trained staff only.

Storage: -20 °C,-80 °C

Storage Comment: Upon receipt, store at -20°C or -80°C. Avoid repeated freeze.

Images



Western Blotting

Image 1. Western blot analysis of 1) Mouse Brain Tissue, 2) Rat Brain Tissue using BEST2 Polyclonal Antibody.



Immunohistochemistry

Image 2. Immunohistochemical analysis of paraffin-embedded Rat Brain Tissue using BEST2 Polyclonal Antibody.