



[Go to Product page](#)

Datasheet for ABIN7189153
anti-CACNA2D3 antibody

1 Image

Overview

Quantity:	100 µg
Target:	CACNA2D3
Reactivity:	Human
Host:	Rabbit
Clonality:	Polyclonal
Conjugate:	This CACNA2D3 antibody is un-conjugated
Application:	Western Blotting (WB), ELISA

Product Details

Immunogen:	Synthetic Peptide
Isotype:	IgG
Cross-Reactivity:	Human, Mouse, Rat
Purification:	The antibody was affinity-purified from rabbit antiserum by affinity-chromatography using specific immunogen.

Target Details

Target:	CACNA2D3
Alternative Name:	CACNA2D3 (CACNA2D3 Products)
Background:	CACNA2D3Voltage-dependent calcium channel subunit alpha-2/delta-3 antibody, Voltage-gated calcium channel subunit alpha-2/delta-3 [Cleaved into: Voltage-dependent calcium channel subunit alpha-2-3, Voltage-dependent calcium channel subunit delta-3] antibody

Target Details

UniProt: [Q8IZS8](#)

Application Details

Application Notes: WB:1:1000-2000,

Restrictions: For Research Use only

Handling

Format: Liquid

Buffer: Liquid in PBS containing 50 % glycerol, 0.5 % BSA and 0.02 % sodium azide.

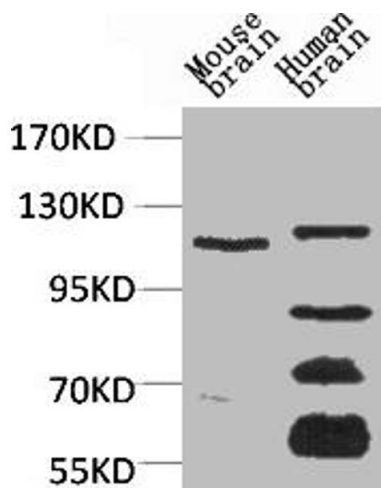
Preservative: Sodium azide

Precaution of Use: This product contains Sodium azide: a POISONOUS AND HAZARDOUS SUBSTANCE which should be handled by trained staff only.

Storage: -20 °C,-80 °C

Storage Comment: Upon receipt, store at -20°C or -80°C. Avoid repeated freeze.

Images



Western Blotting

Image 1. Western blot analysis of 1) Mouse Brain Tissue, 2) Human Brain Tissue, with CaV α 2 δ 3 Rabbit pAb diluted at 1:2,000.