



[Go to Product page](#)

Datasheet for ABIN7189221  
**anti-GABRA3 antibody**

3 Images

Overview

Quantity:	100 µg
Target:	GABRA3
Reactivity:	Human
Host:	Rabbit
Clonality:	Polyclonal
Conjugate:	This GABRA3 antibody is un-conjugated
Application:	Western Blotting (WB), Immunohistochemistry (IHC), ELISA

Product Details

Immunogen:	Synthetic Peptide
Isotype:	IgG
Cross-Reactivity:	Human, Mouse, Rat
Purification:	The antibody was affinity-purified from rabbit antiserum by affinity-chromatography using specific immunogen.

Target Details

Target:	GABRA3
Alternative Name:	GABRA3 ( <a href="#">GABRA3 Products</a> )
Background:	GABA A Receptor alpha 3 antibody, GABA(A) receptor subunit alpha 3 antibody, GABA(A) receptor subunit alpha-3 antibody, GABR A3 antibody, GABRA 3 antibody, Gabra3 antibody, Gamma aminobutyric acid (GABA) A receptor alpha 3 antibody, Gamma aminobutyric acid A

## Target Details

receptor alpha 3 antibody, Gamma aminobutyric acid receptor subunit alpha 3 antibody, Gamma-aminobutyric acid receptor subunit alpha-3 antibody, GBRA3\_HUMAN antibody, MGC33793 antibody

UniProt: [P34903](#)

## Application Details

Application Notes: WB:1:1000-2000, IHC:1:100-200,

Restrictions: For Research Use only

## Handling

Format: Liquid

Buffer: Liquid in PBS containing 50 % glycerol, 0.5 % BSA and 0.02 % sodium azide.

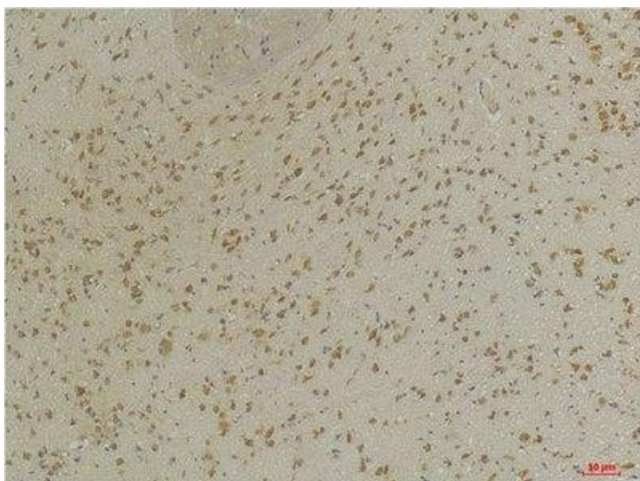
Preservative: Sodium azide

Precaution of Use: This product contains Sodium azide: a POISONOUS AND HAZARDOUS SUBSTANCE which should be handled by trained staff only.

Storage: -20 °C,-80 °C

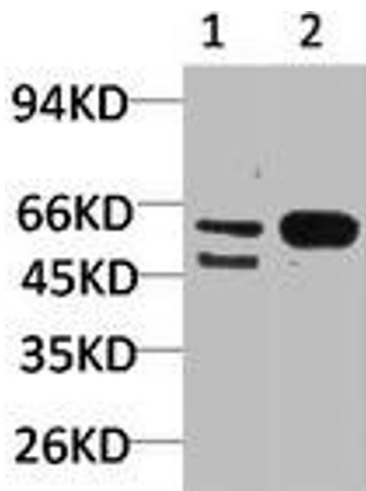
Storage Comment: Upon receipt, store at -20°C or -80°C. Avoid repeated freeze.

## Images



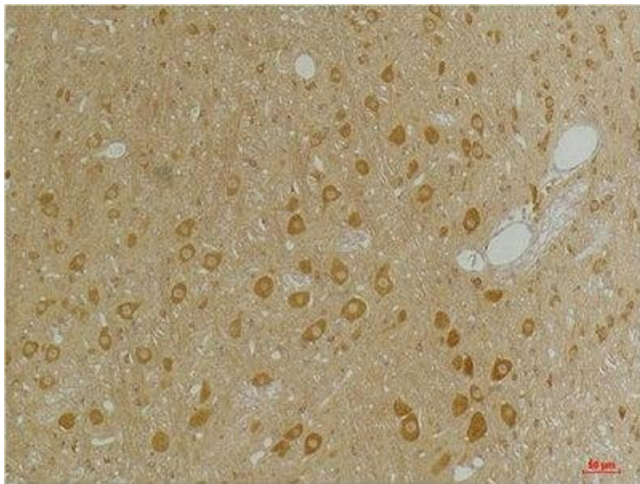
### Immunohistochemistry

**Image 1.** Immunohistochemical analysis of paraffin-embedded Mouse BrainTissue using GABA A Receptor  $\alpha 3$  Rabbit pAb diluted at 1:200.



### Western Blotting

**Image 2.** Western blot analysis of 1) Mouse Brain Tissue, 2) Rat Brain Tissue with GABA A Receptor  $\alpha 3$  Rabbit pAb diluted at 1:2,000.



### Immunohistochemistry

**Image 3.** Immunohistochemical analysis of paraffin-embedded Rat Brain Tissue using GABA A Receptor  $\alpha 3$  Rabbit pAb diluted at 1:200.