

Datasheet for ABIN7189292

**anti-Myosin Heavy Chain antibody**[Go to Product page](#)**1** Image

## Overview

Quantity:	100 µg
Target:	Myosin Heavy Chain
Reactivity:	Human
Host:	Mouse
Clonality:	Monoclonal
Conjugate:	This Myosin Heavy Chain antibody is un-conjugated
Application:	Immunofluorescence (IF), ELISA

## Product Details

Immunogen:	Synthetic Peptide
Isotype:	IgG
Cross-Reactivity:	Blow Fly, Human, Mouse, Nematode, Rat
Purification:	Affinity purified

## Target Details

Target:	Myosin Heavy Chain
Abstract:	<a href="#">Myosin Heavy Chain Products</a>

## Application Details

Application Notes:	Recommended dilution:IF:1:100-1:200,
--------------------	--------------------------------------

## Application Details

Restrictions: For Research Use only

## Handling

Format: Liquid

Buffer: PBS, pH 7.4, containing 0.02 % sodium azide as Preservative and 50 % Glycerol.

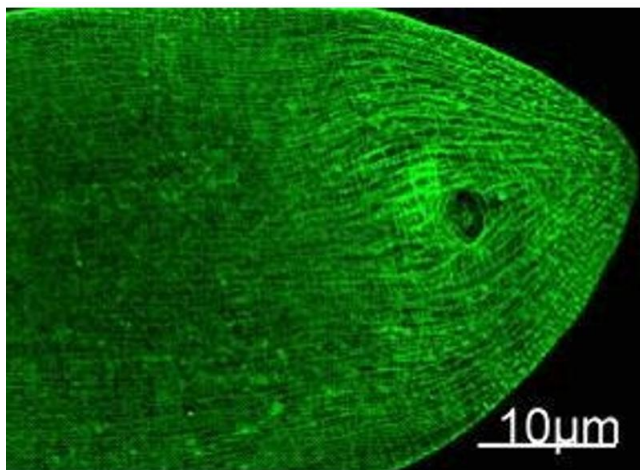
Preservative: Sodium azide

Precaution of Use: This product contains Sodium azide: a POISONOUS AND HAZARDOUS SUBSTANCE which should be handled by trained staff only.

Storage: -20 °C,-80 °C

Storage Comment: Upon receipt, store at -20°C or -80°C. Avoid repeated freeze.

## Images



### Immunofluorescence

**Image 1.** Immunofluorescence Staining of nematode tissue with MYH mouse mAb (11C2) diluted at 1:100. (Provide by Tsinghua University) .