



Datasheet for ABIN7189299
anti-CNDP2 antibody



[Go to Product page](#)

1 Image

Overview

Quantity:	100 µg
Target:	CNDP2
Reactivity:	Zea mays
Host:	Rabbit
Clonality:	Polyclonal
Conjugate:	This CNDP2 antibody is un-conjugated
Application:	Western Blotting (WB)

Product Details

Immunogen:	Synthetic Peptide
Isotype:	IgG
Cross-Reactivity:	Zea mays
Purification:	Affinity purification

Target Details

Target:	CNDP2
Alternative Name:	PEP1 (CNDP2 Products)
Background:	PEP1, Phosphoenolpyruvate carboxylase 1, PEPC 1, PEPCase 1, PPC
UniProt:	P04711

Application Details

Application Notes: WB:1:2000-5000,

Restrictions: For Research Use only

Handling

Format: Liquid

Buffer: PBS, pH 7.4, containing 0.02 % sodium azide as Preservative and 50 % Glycerol.

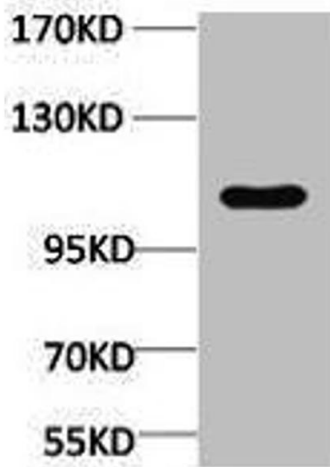
Preservative: Sodium azide

Precaution of Use: This product contains Sodium azide: a POISONOUS AND HAZARDOUS SUBSTANCE which should be handled by trained staff only.

Storage: -20 °C,-80 °C

Storage Comment: Upon receipt, store at -20°C or -80°C. Avoid repeated freeze.

Images



Western Blotting

Image 1. Western blot analysis of Maize, diluted at 1:4000.