



[Go to Product page](#)

Datasheet for ABIN7189353

anti-TUBB1 antibody

1 Image

Overview

Quantity:	100 µg
Target:	TUBB1
Reactivity:	Human
Host:	Mouse
Clonality:	Monoclonal
Conjugate:	This TUBB1 antibody is un-conjugated
Application:	Western Blotting (WB), ELISA

Product Details

Immunogen:	Synthetic Peptide
Isotype:	IgG
Cross-Reactivity:	Human, Mouse, Rat
Purification:	Affinity purified

Target Details

Target:	TUBB1
Alternative Name:	TUBB1 (TUBB1 Products)
Background:	TUBB1, Tubulin beta-1 chain, TUBB2A, TUBB2, Tubulin beta-2A chain, TUBB2B, Tubulin beta-2B chain, TUBB4B, TUBB2C, Tubulin beta-4B chain, Tubulin beta-2 chain, Tubulin beta-2C chain, TUBB3, TUBB4, Tubulin beta-3 chain, Tubulin beta-4 chain, Tubulin beta-II

Target Details

UniProt: [Q9H4B7](#)

Pathways: [Microtubule Dynamics](#)

Application Details

Application Notes: Recommended dilution:WB:1:500-1:5000,

Restrictions: For Research Use only

Handling

Format: Liquid

Buffer: PBS, pH 7.4, containing 0.02 % sodium azide as Preservative and 50 % Glycerol.

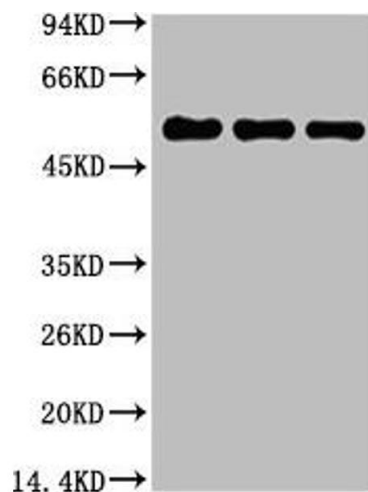
Preservative: Sodium azide

Precaution of Use: This product contains Sodium azide: a POISONOUS AND HAZARDOUS SUBSTANCE which should be handled by trained staff only.

Storage: -20 °C,-80 °C

Storage Comment: Upon receipt, store at -20°C or -80°C. Avoid repeated freeze.

Images



Western Blotting

Image 1. Western blot analysis of 1) HeLa, 2) Mouse Brain Tissue, 3) Rat Brain Tissue, diluted at 1:5000.